

**DAMAC**

TOWER

— NINE ELMS, LONDON —

# NINE ELMS LONDON

FLOOR PLANS  
AND  
AMENITY FEATURES

interior design by

**VERSACE**  
HOME

# DEVELOPMENT SUMMARY

Kohn Pedersen Fox Associates (KPF) is the multiple award-winning firm of architects behind the DAMAC Tower development. A leader in its field, KPF's diverse portfolio comprises stunning residential, hospitality and mixed-use projects, as well as inspiring corporate, academic, civic and transportation developments, which span more than 35 countries.

DAMAC Tower will present a unique landmark on the London skyline with its bespoke façade and staggered floor arrangement. The towering 50-storey building will comprise light coloured stone, utilising glass reinforced concrete (GRC), and feature floor-to-ceiling picture windows, ceramic tiled panels and warm terracotta, along with 'winter gardens' that open doors from every apartment to exquisite panoramic views of London.

The double height entrance lobby will be complemented by a residential forecourt, beautifully landscaped using high quality materials, with spacious retail units facing onto the forecourt. Boutique office space will feature in the south tower.

Residences will be available in studio, one, two and three bedroom arrangements in addition to a small number of exclusive penthouse suites. The arrangement of the winter gardens attached to every apartment will be such that there is complete continuity between the glamorous Versace Home interiors and the great outdoors.

A range of luxury amenities will be available to residents, including expansive roof gardens overlooking London. Most unusually, the state-of-the-art gymnasium, swimming pool and Jacuzzi, all featuring elements of the signature Versace style, will be uniquely set on the 23rd floor of the north tower, and flooded with natural daylight as well as boast inspiring vistas of the surrounding neighbourhood.

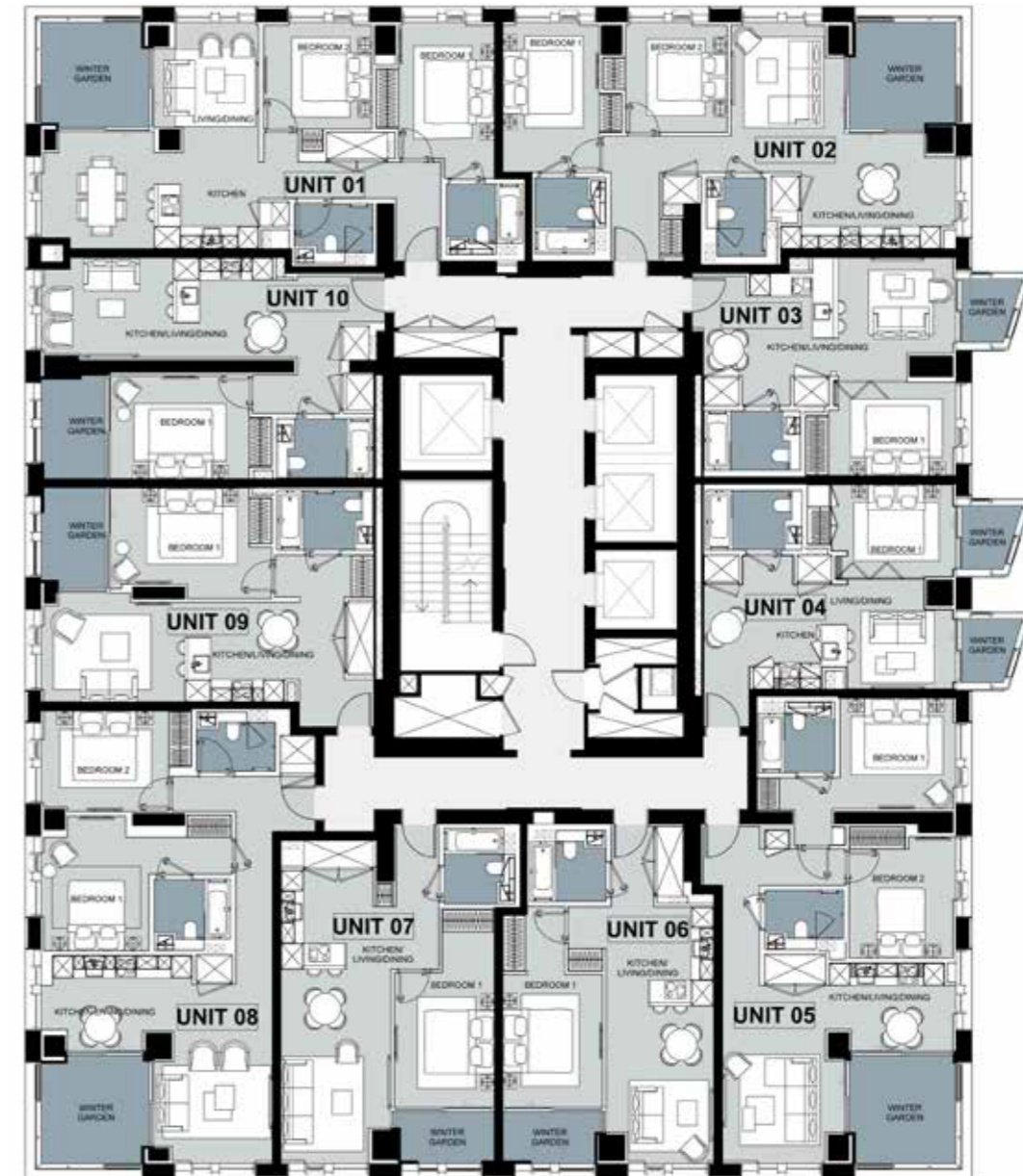
Put simply, life at DAMAC Tower will represent the ultimate in luxury, the ultimate in Versace Home.



# FLOOR PLANS

## LEVELS 4 & 8-11

### TYPICAL FLOOR PLANS



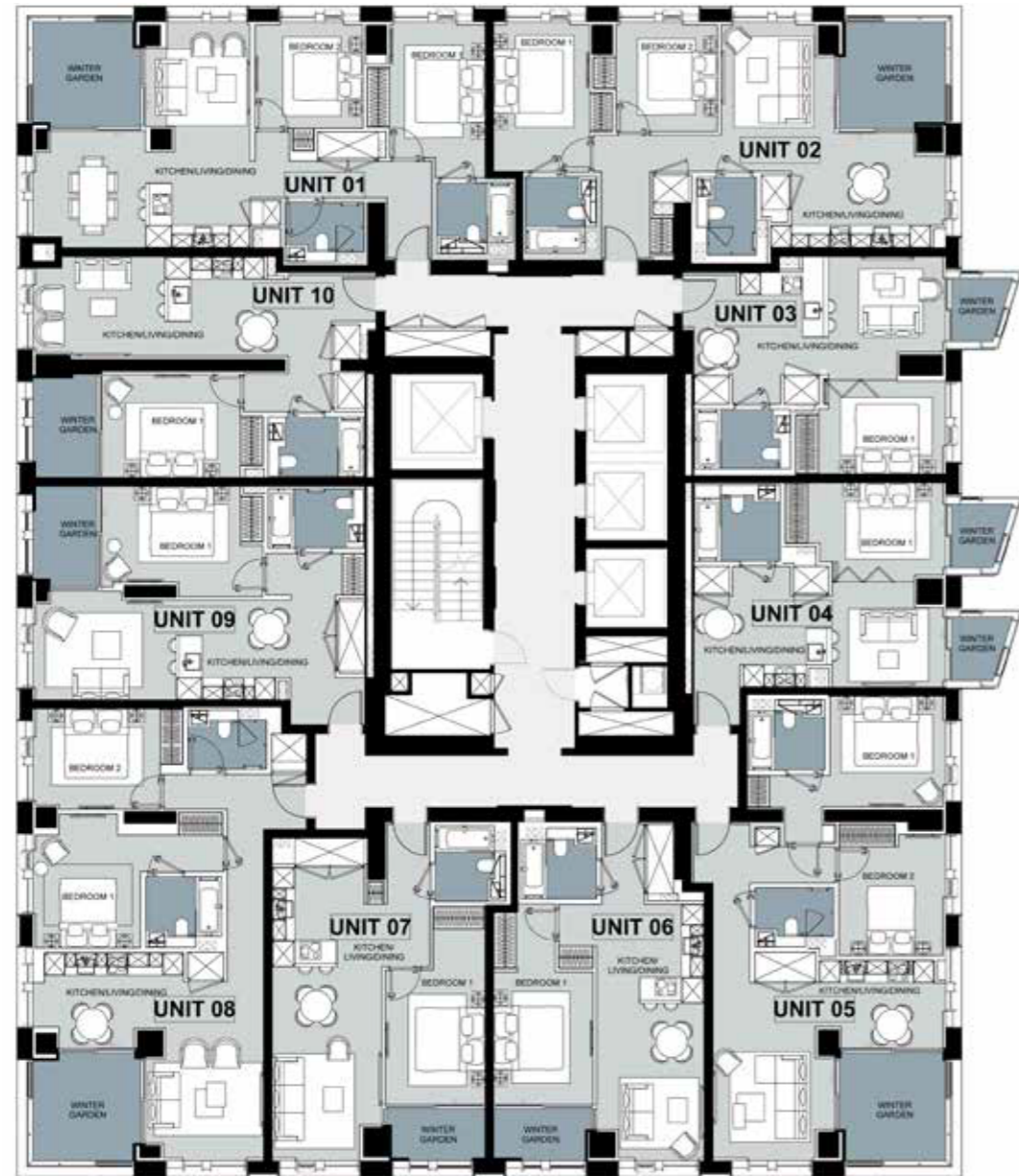
	UNIT 01 2B-A.1	UNIT 02 2B-A.2	UNIT 03 ST-A.1	UNIT 04 ST-A.2	UNIT 05 2B-B.1
Kitchen/Living/Dining	9' 9" / 20' 5" x 11' 1" / 21' 3"	10' 7" / 33' 3" x 21' 3"	23' 8" x 11' 2"	23' 8" x 9' 8"	11' 5" / 22' x 16' 8"
Bedroom 1	9' x 12' 8" / 14' 7"	9' 1" x 14' 1"	12' x 8' 8"	11' 9" x 8' 7"	16' 6" x 10' 5"
Bedroom 2	10' 2" x 10' 1"	9' 6" x 10' 4"	-	-	10' 1" x 10' 2"
Apartment Area	839.58 ft <sup>2</sup>	798.68 ft <sup>2</sup>	477.92 ft <sup>2</sup>	477.92 ft <sup>2</sup>	823.44 ft <sup>2</sup>
Winter Garden	99.03 ft <sup>2</sup>	96.88 ft <sup>2</sup>	30.14 ft <sup>2</sup>	60.28 ft <sup>2</sup>	101.18 ft <sup>2</sup>
<b>Total Area</b>	<b>938.61 ft<sup>2</sup></b>	<b>895.56 ft<sup>2</sup></b>	<b>508.06 ft<sup>2</sup></b>	<b>538.2 ft<sup>2</sup></b>	<b>924.62 ft<sup>2</sup></b>

	UNIT 06 1B-A.3	UNIT 07 2B-A.2	UNIT 08 ST-A.1	UNIT 09 ST-A.2	UNIT 10 2B-B.1
Kitchen/Living/Dining	10' 1" x 24' 2" / 32'	10' 3" / 14' 9" x 27' 7"	21' 8" x 9' 1" / 19' 7"	28' 5" x 9' 4"	32' 4" x 9' 4"
Bedroom 1	9' 4" x 12' 5" / 18' 9"	9' 3" x 12' 7" / 16' 5"	10' 2" / 18" x 10' 7"	15' 2" x 10' 5"	13' 2" x 9' 7"
Bedroom 2	-	-	12' x 9' 5"	-	-
Apartment Area	547.88 ft <sup>2</sup>	593.09 ft <sup>2</sup>	856.81 ft <sup>2</sup>	589.86 ft <sup>2</sup>	578.02 ft <sup>2</sup>
Winter Garden	43.06 ft <sup>2</sup>	43.06 ft <sup>2</sup>	102.26 ft <sup>2</sup>	55.97 ft <sup>2</sup>	58.13 ft <sup>2</sup>
<b>Total Area</b>	<b>590.94 ft<sup>2</sup></b>	<b>636.15 ft<sup>2</sup></b>	<b>959.06 ft<sup>2</sup></b>	<b>645.83 ft<sup>2</sup></b>	<b>636.15 ft<sup>2</sup></b>

ALL SPECIFICATIONS, PICTURES, DIAGRAMS, LAYOUTS, PHOTOGRAPHS AND OTHER GRAPHIC MATERIAL USED ARE FOR ILLUSTRATIVE PURPOSES ONLY. LAYOUTS AND INDIVIDUAL FEATURES, SPECIFICATIONS AND ITEMS MAY VARY OR BE SUBSTITUTED FOR REPLACEMENT LAYOUTS, FEATURES, SPECIFICATIONS OR ITEMS OF EQUIVALENT STANDARD AND STYLE. THE ABOVE MATERIAL IS CORRECT AT THE TIME OF PRINT BUT MAY BE SUBJECT TO CHANGE AS NECESSARY AND WITHOUT NOTICE. SPECIFICATIONS ARE INDICATIVE OF THE QUALITY AND STYLE OF THE SPECIFICATION ONLY AND MAY NOT REPRESENT WHOLLY THE ACTUAL SPECIFICATIONS AT THE DEVELOPMENT. SPECIFICATIONS AND GRAPHIC MATERIALS ARE NOT INTENDED TO FORM PART OF ANY CONTRACT OR WARRANTY UNLESS SPECIFICALLY INCORPORATED IN WRITING INTO THE CONTRACT.

# LEVELS 5-7

## TYPICAL FLOOR PLANS



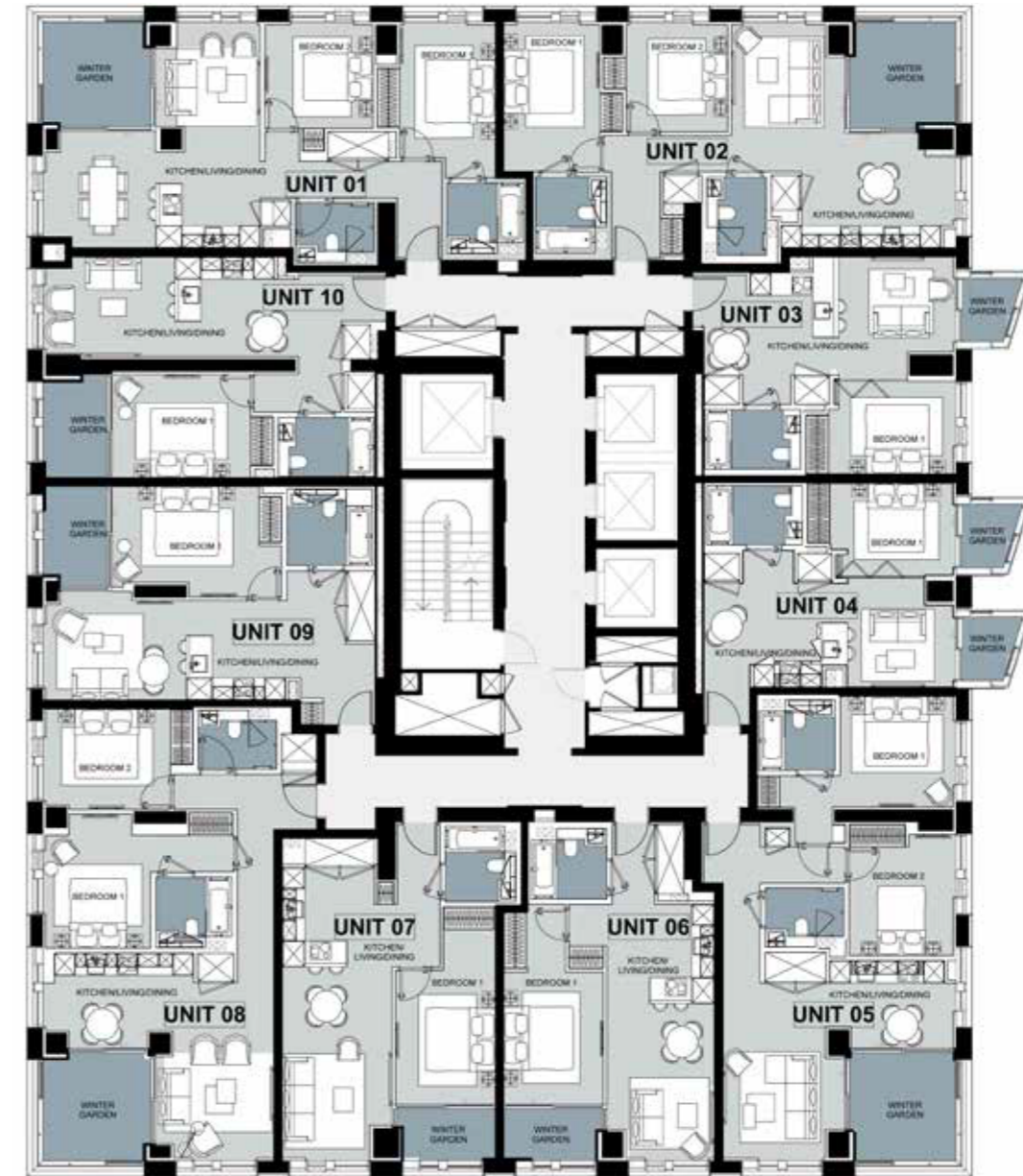
	UNIT 01 2B-A.1	UNIT 02 2B-A.2	UNIT 03 ST-A.1	UNIT 04 ST-A.2 AC	UNIT 05 2B-B.1
Kitchen/Living/Dining	9' 9" / 20' 5" x 11' 1" / 21' 3"	10' 7" / 33' 3" x 21' 3"	23' 8" x 11' 2"	23' 8" x 8' 6"	11' 5" / 22' x 16' 8"
Bedroom 1	9' x 12' 8" / 14' 7"	9' 1" x 14' 1"	12' x 8' 8"	13' x 8' 7"	16' 6" x 10' 5"
Bedroom 2	10' 2" x 10' 1"	9' 6" x 10' 4"	-	-	10' 1" x 10' 2"
Apartment Area	839.58 ft <sup>2</sup>	796.53 ft <sup>2</sup>	477.92 ft <sup>2</sup>	475.76 ft <sup>2</sup>	826.67 ft <sup>2</sup>
Winter Garden	97.95 ft <sup>2</sup>	97.95 ft <sup>2</sup>	31.22 ft <sup>2</sup>	59.2 ft <sup>2</sup>	101.18 ft <sup>2</sup>
<b>Total Area</b>	<b>937.54 ft<sup>2</sup></b>	<b>894.48 ft<sup>2</sup></b>	<b>509.13 ft<sup>2</sup></b>	<b>534.97 ft<sup>2</sup></b>	<b>927.85 ft<sup>2</sup></b>

	UNIT 06 1B-A.3	UNIT 07 1B-A.4	UNIT 08 2B-B.2	UNIT 09 1B-A.5	UNIT 10 1B-A.6
Kitchen/Living/Dining	10' 1" x 24' 2" / 32'	10' 3" / 14' 9" x 27' 7"	28' 5" x 9' 4"	28' 5" x 9' 4"	32' 4" x 9' 4"
Bedroom 1	9' 4" x 12' 5" / 18' 9"	9' 3" x 12' 7" / 16' 5"	15' 2" x 10' 5"	15' 2" x 10' 5"	13' 2" x 9' 7"
Apartment Area	542.5 ft <sup>2</sup>	588.79 ft <sup>2</sup>	588.79 ft <sup>2</sup>	588.79 ft <sup>2</sup>	574.79 ft <sup>2</sup>
Winter Garden	43.06 ft <sup>2</sup>	43.06 ft <sup>2</sup>	57.05 ft <sup>2</sup>	57.05 ft <sup>2</sup>	55.97 ft <sup>2</sup>
<b>Total Area</b>	<b>585.56 ft<sup>2</sup></b>	<b>631.84 ft<sup>2</sup></b>	<b>645.83 ft<sup>2</sup></b>	<b>645.83 ft<sup>2</sup></b>	<b>630.76 ft<sup>2</sup></b>

ALL SPECIFICATIONS, PICTURES, DIAGRAMS, LAYOUTS, PHOTOGRAPHS AND OTHER GRAPHIC MATERIAL USED ARE FOR ILLUSTRATIVE PURPOSES ONLY. LAYOUTS AND INDIVIDUAL FEATURES, SPECIFICATIONS AND ITEMS MAY VARY OR BE SUBSTITUTED FOR REPLACEMENT LAYOUTS, FEATURES, SPECIFICATIONS OR ITEMS OF EQUIVALENT STANDARD AND STYLE. THE ABOVE MATERIAL IS CORRECT AT THE TIME OF PRINT BUT MAY BE SUBJECT TO CHANGE AS NECESSARY AND WITHOUT NOTICE. SPECIFICATIONS ARE INDICATIVE OF THE QUALITY AND STYLE OF THE SPECIFICATION ONLY AND MAY NOT REPRESENT WHOLLY THE ACTUAL SPECIFICATIONS AT THE DEVELOPMENT. SPECIFICATIONS AND GRAPHIC MATERIALS ARE NOT INTENDED TO FORM PART OF ANY CONTRACT OR WARRANTY UNLESS SPECIFICALLY INCORPORATED IN WRITING INTO THE CONTRACT.

# LEVELS 12-16

## TYPICAL FLOOR PLANS



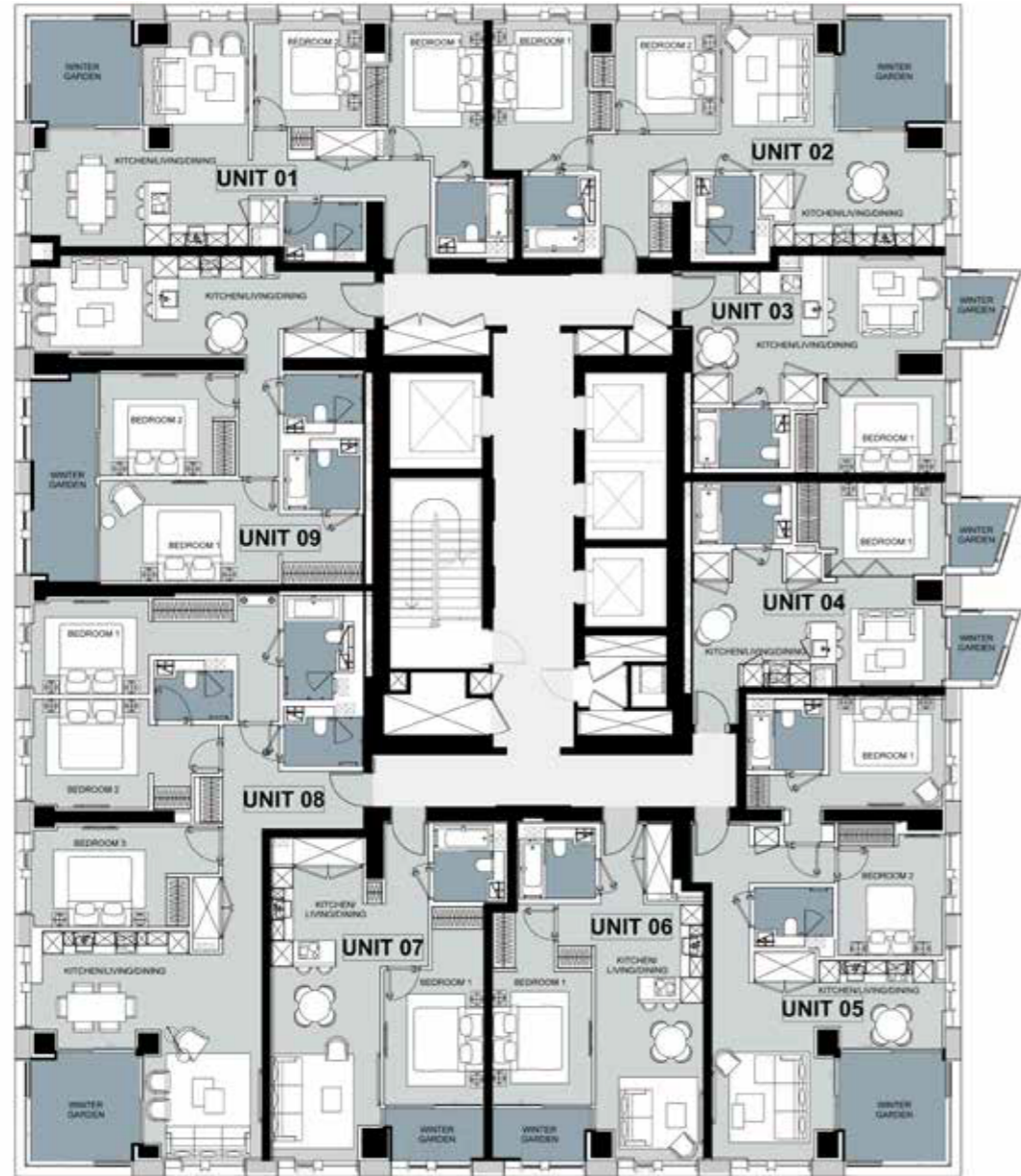
	UNIT 01 2B-A.1	UNIT 02 2B-A.2	UNIT 03 ST-A.1	UNIT 04 ST-A.2	UNIT 05 2B-B.1
Kitchen/Living/Dining	9' 9" / 20' 5" x 11' 1" / 21' 3"	10' 7" / 33' 3" x 21' 3"	23' 8" x 11' 2"	23' 8" x 9' 8"	11' 5" / 22' x 16' 8"
Bedroom 1	9' x 12' 8" / 14' 7"	9' 1" x 14' 1"	12' x 8' 8"	11' 9" x 8' 7"	16' 6" x 10' 5"
Bedroom 2	10' 2" x 10' 1"	9' 6" x 10' 4"	-	-	10' 1" x 10' 2"
Apartment Area	842.81 ft <sup>2</sup>	800.83 ft <sup>2</sup>	480.07 ft <sup>2</sup>	476.84 ft <sup>2</sup>	827.74 ft <sup>2</sup>
Winter Garden	96.88 ft <sup>2</sup>	96.88 ft <sup>2</sup>	29.06 ft <sup>2</sup>	60.28 ft <sup>2</sup>	101.18 ft <sup>2</sup>
<b>Total Area</b>	<b>939.69 ft<sup>2</sup></b>	<b>897.71 ft<sup>2</sup></b>	<b>509.13 ft<sup>2</sup></b>	<b>537.12 ft<sup>2</sup></b>	<b>928.92 ft<sup>2</sup></b>

	UNIT 06 1B-A.3	UNIT 07 1B-A.4	UNIT 08 2B-B.2	UNIT 09 1B-A.5 AC	UNIT 10 1B-A.6
Kitchen/Living/Dining	10' 1" x 24' 2" / 32'	10' 3" / 14' 9" x 27' 7"	21' 8" x 9' 1" / 19' 7"	28' 5" x 9' 4"	32' 4" x 9' 4"
Bedroom 1	9' 4" x 12' 5" / 18' 9"	9' 3" x 12' 7" / 16' 5"	10' 2" / 18' x 10' 7"	16' x 10' 5"	13' 2" x 9' 7"
Bedroom 2	-	-	12' x 9' 5"	-	-
Apartment Area	538.2 ft <sup>2</sup>	589.86 ft <sup>2</sup>	854.65 ft <sup>2</sup>	579.1 ft <sup>2</sup>	575.87 ft <sup>2</sup>
Winter Garden	43.06 ft <sup>2</sup>	41.98 ft <sup>2</sup>	101.18 ft <sup>2</sup>	55.97 ft <sup>2</sup>	57.05 ft <sup>2</sup>
<b>Total Area</b>	<b>581.25 ft<sup>2</sup></b>	<b>631.84 ft<sup>2</sup></b>	<b>955.83 ft<sup>2</sup></b>	<b>635.07 ft<sup>2</sup></b>	<b>632.92 ft<sup>2</sup></b>

ALL SPECIFICATIONS, PICTURES, DIAGRAMS, LAYOUTS, PHOTOGRAPHS AND OTHER GRAPHIC MATERIAL USED ARE FOR ILLUSTRATIVE PURPOSES ONLY. LAYOUTS AND INDIVIDUAL FEATURES, SPECIFICATIONS AND ITEMS MAY VARY OR BE SUBSTITUTED FOR REPLACEMENT LAYOUTS, FEATURES, SPECIFICATIONS OR ITEMS OF EQUIVALENT STANDARD AND STYLE. THE ABOVE MATERIAL IS CORRECT AT THE TIME OF PRINT BUT MAY BE SUBJECT TO CHANGE AS NECESSARY AND WITHOUT NOTICE. SPECIFICATIONS ARE INDICATIVE OF THE QUALITY AND STYLE OF THE SPECIFICATION ONLY AND MAY NOT REPRESENT WHOLLY THE ACTUAL SPECIFICATIONS AT THE DEVELOPMENT. SPECIFICATIONS AND GRAPHIC MATERIALS ARE NOT INTENDED TO FORM PART OF ANY CONTRACT OR WARRANTY UNLESS SPECIFICALLY INCORPORATED IN WRITING INTO THE CONTRACT.

# LEVEL 17

## FLOOR PLAN



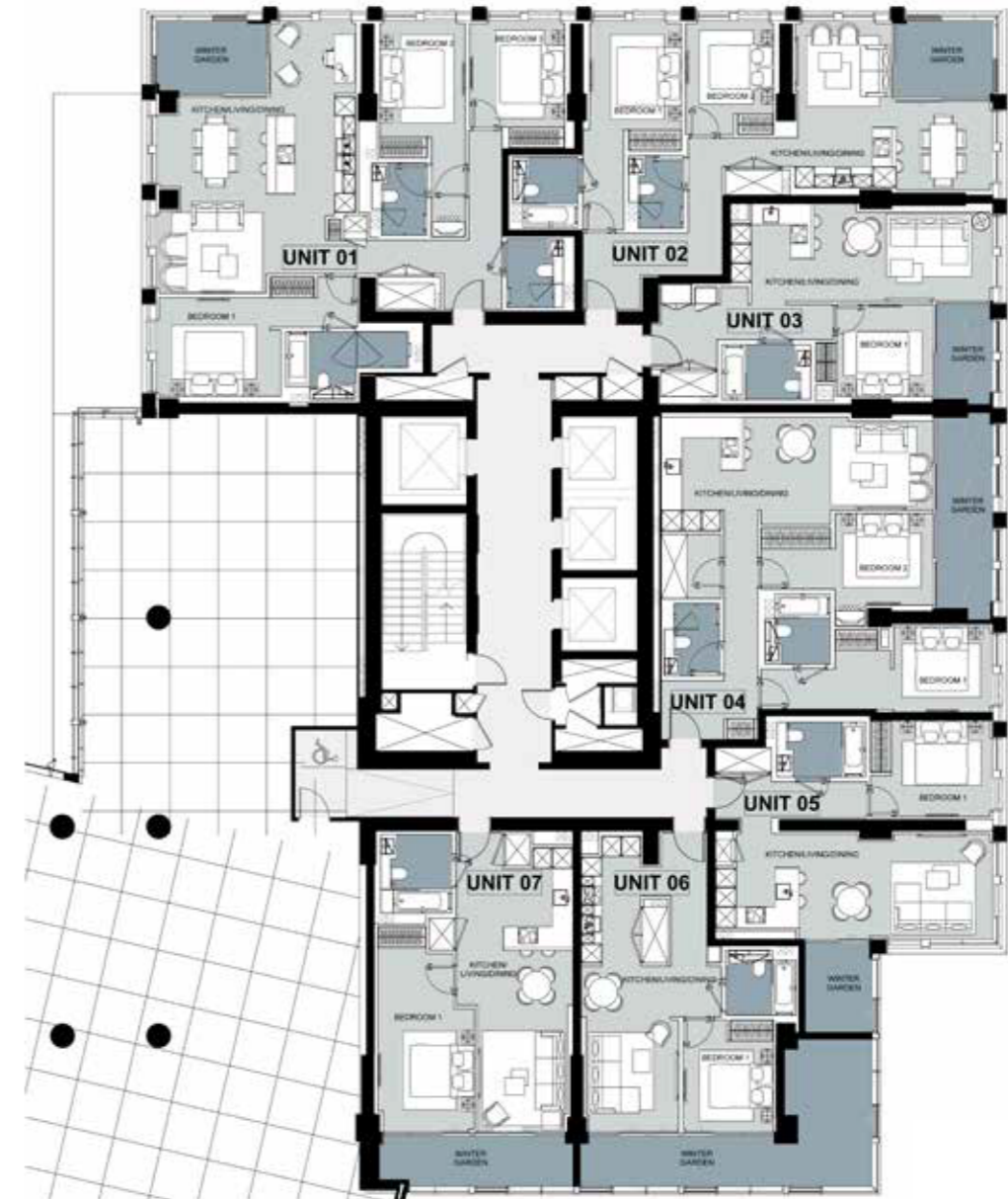
	UNIT 01 2B-A.1	UNIT 02 2B-A.2	UNIT 03 ST-A.1	UNIT 04 ST-A.2	UNIT 05 2B-B.1
Kitchen/Living/Dining	9' 9" / 20' 5" x 11' 1" / 21' 3"	10' 7" / 33' 3" x 21' 3"	23' 8" x 11' 2"	23' 8" x 9' 8"	11' 5" / 22' x 16' 8"
Bedroom 1	9' x 12' 8" / 14' 7"	9' 1" x 14' 1"	12' x 8' 8"	11' 9" x 8' 7"	16' 6" x 10' 5"
Bedroom 2	10' 2" x 10' 1"	9' 6" x 10' 4"	-	-	10' 1" x 10' 2"
Apartment Area	844.97 ft <sup>2</sup>	801.91 ft <sup>2</sup>	475.76 ft <sup>2</sup>	472.54 ft <sup>2</sup>	826.67 ft <sup>2</sup>
Winter Garden	99.03 ft <sup>2</sup>	96.88 ft <sup>2</sup>	30.14 ft <sup>2</sup>	60.28 ft <sup>2</sup>	103.33 ft <sup>2</sup>
<b>Total Area</b>	<b>943.99 ft<sup>2</sup></b>	<b>898.79 ft<sup>2</sup></b>	<b>505.9 ft<sup>2</sup></b>	<b>532.81 ft<sup>2</sup></b>	<b>930 ft<sup>2</sup></b>

	UNIT 06 1B-A.3	UNIT 07 1B-A.4	UNIT 08 3B-A.1	UNIT 09 2B-C.1
Kitchen/Living/Dining	10' 1" x 24' 2" / 32'	10' 3" / 14' 9" x 27' 7"	21' 8" x 11' / 21' 6"	23' 4" / 32' 4" x 9' 4"
Bedroom 1	9' 4" x 12' 5" / 18' 9"	9' 3" x 12' 7" / 16' 5"	11' 1" / 23' 4" x 8' 9"	16' 8" / 24' 7" x 9' 6"
Bedroom 2	-	-	11' 1" / 17' 7" x 10' 3"	12' 8" x 9' 6"
Bedroom 3	-	-	12' 7" / 17' 7" x 9' 5"	-
Apartment Area	541.42 ft <sup>2</sup>	597.4 ft <sup>2</sup>	1258.3 ft <sup>2</sup>	829.9 ft <sup>2</sup>
Winter Garden	45.21 ft <sup>2</sup>	43.06 ft <sup>2</sup>	100.1 ft <sup>2</sup>	118.4 ft <sup>2</sup>
<b>Total Area</b>	<b>586.63 ft<sup>2</sup></b>	<b>640.45 ft<sup>2</sup></b>	<b>1358.4 ft<sup>2</sup></b>	<b>948.3 ft<sup>2</sup></b>

ALL SPECIFICATIONS, PICTURES, DIAGRAMS, LAYOUTS, PHOTOGRAPHS AND OTHER GRAPHIC MATERIAL USED ARE FOR ILLUSTRATIVE PURPOSES ONLY. LAYOUTS AND INDIVIDUAL FEATURES, SPECIFICATIONS AND ITEMS MAY VARY OR BE SUBSTITUTED FOR REPLACEMENT LAYOUTS, FEATURES, SPECIFICATIONS OR ITEMS OF EQUIVALENT STANDARD AND STYLE. THE ABOVE MATERIAL IS CORRECT AT THE TIME OF PRINT BUT MAY BE SUBJECT TO CHANGE AS NECESSARY AND WITHOUT NOTICE. SPECIFICATIONS ARE INDICATIVE OF THE QUALITY AND STYLE OF THE SPECIFICATION ONLY AND MAY NOT REPRESENT WHOLLY THE ACTUAL SPECIFICATIONS AT THE DEVELOPMENT. SPECIFICATIONS AND GRAPHIC MATERIALS ARE NOT INTENDED TO FORM PART OF ANY CONTRACT OR WARRANTY UNLESS SPECIFICALLY INCORPORATED IN WRITING INTO THE CONTRACT.

# LEVEL 18

## FLOOR PLAN



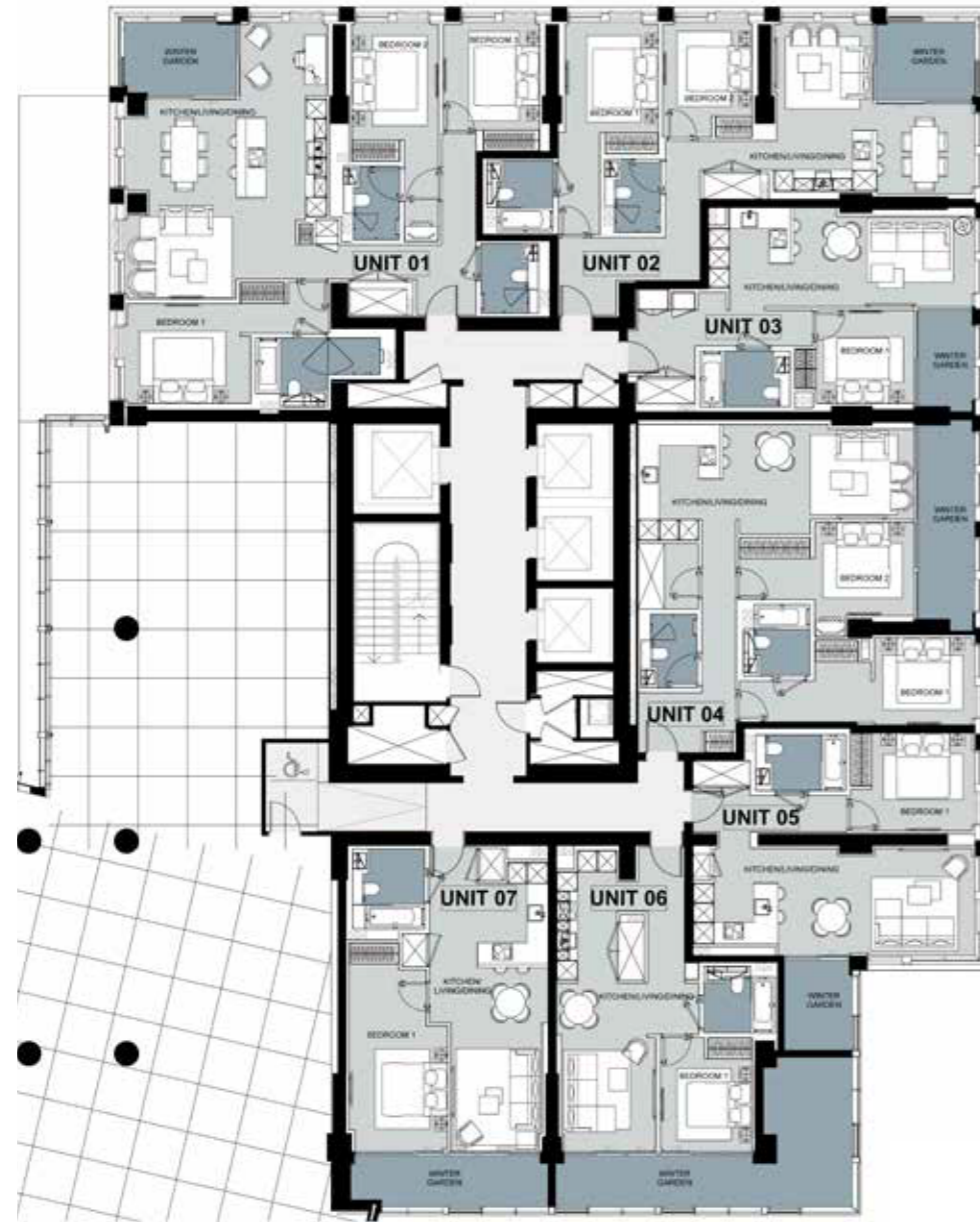
	UNIT 01 3B-B.1'	UNIT 02 2B-A.3'	UNIT 03 1B-B.1'	UNIT 04 2B-C.2'
Kitchen/Living/Dining	20' 3" x 25' 8"	9' 7" / 19' 9" x 17'	26' 7" x 9' 9"	27' 7" x 11' 5"
Bedroom 1	12' 7" / 20' 5" x 10'	9' 3" x 11' 1" / 21' 3"	9' 8" x 9' 8"	16' 1" / 23' 6" x 8' 7"
Bedroom 2	8' 7" x 11' 9" / 22"	9' x 11' 6"	-	9' 9" / 17' 5" x 9' 4"
Bedroom 3	9' 7" x 10' 9"	-	-	-
Apartment Area	1307.81 ft <sup>2</sup>	833.13 ft <sup>2</sup>	547.88 ft <sup>2</sup>	922.47 ft <sup>2</sup>
Winter Garden	82.88 ft <sup>2</sup>	77.5 ft <sup>2</sup>	54.9 ft <sup>2</sup>	111.94 ft <sup>2</sup>
<b>Total Area</b>	<b>1390.7 ft<sup>2</sup></b>	<b>910.63 ft<sup>2</sup></b>	<b>602.78 ft<sup>2</sup></b>	<b>1034.41 ft<sup>2</sup></b>

	UNIT 05 1B-C.1'	UNIT 06 1B-D.1'	UNIT 07 1B-D.2' AC
Kitchen/Living/Dining	28' 3" x 10' 8"	12' 9" x 19' / 30' 7"	11' 9" x 30' 7"
Bedroom 1	12' 5" x 9' 8"	9' 2" x 11' 4"	10' 2" x 18' 8"
Apartment Area	614.62 ft <sup>2</sup>	556.49 ft <sup>2</sup>	606.01 ft <sup>2</sup>
Winter Garden	62.43 ft <sup>2</sup>	244.34 ft <sup>2</sup>	102.26 ft <sup>2</sup>
<b>Total Area</b>	<b>677.05 ft<sup>2</sup></b>	<b>800.83 ft<sup>2</sup></b>	<b>708.26 ft<sup>2</sup></b>

ALL SPECIFICATIONS, PICTURES, DIAGRAMS, LAYOUTS, PHOTOGRAPHS AND OTHER GRAPHIC MATERIAL USED ARE FOR ILLUSTRATIVE PURPOSES ONLY. LAYOUTS AND INDIVIDUAL FEATURES, SPECIFICATIONS AND ITEMS MAY VARY OR BE SUBSTITUTED FOR REPLACEMENT LAYOUTS, FEATURES, SPECIFICATIONS OR ITEMS OF EQUIVALENT STANDARD AND STYLE. THE ABOVE MATERIAL IS CORRECT AT THE TIME OF PRINT BUT MAY BE SUBJECT TO CHANGE AS NECESSARY AND WITHOUT NOTICE. SPECIFICATIONS ARE INDICATIVE OF THE QUALITY AND STYLE OF THE SPECIFICATION ONLY AND MAY NOT REPRESENT WHOLLY THE ACTUAL SPECIFICATIONS AT THE DEVELOPMENT. SPECIFICATIONS AND GRAPHIC MATERIALS ARE NOT INTENDED TO FORM PART OF ANY CONTRACT OR WARRANTY UNLESS SPECIFICALLY INCORPORATED IN WRITING INTO THE CONTRACT.

# LEVELS 19-23

## TYPICAL FLOOR PLANS

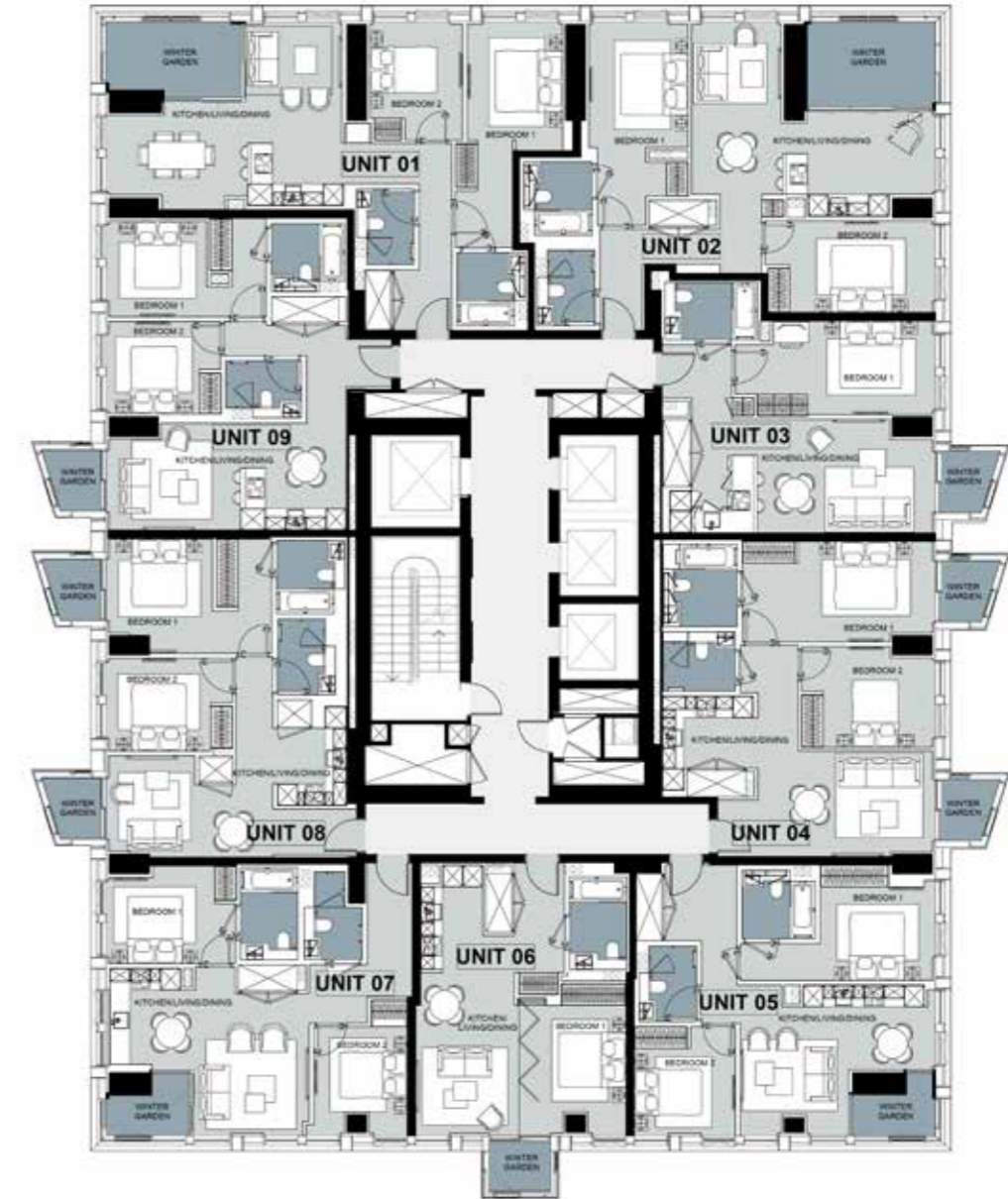


	UNIT 01 3B-B.1	UNIT 02 2B-A.3	UNIT 03 1B-B.1	UNIT 04 2B-C.2
Kitchen/Living/Dining	20' 6" x 25' 8"	9' 9" / 20' 1" x 17' 2"	26' 7" x 9' 9"	27' 7" x 11' 3"
Bedroom 1	12' 7" / 20' 5" x 10'	9' 7" x 11' 1" / 21' 3"	9' 8" x 9' 8"	16' 1" / 23' 6" x 8' 7"
Bedroom 2	9' x 11' 9" / 22'	9' x 11' 8"	-	9' 9" / 17' 5" x 9' 7"
Bedroom 3	10' 3" x 10' 9"	-	-	-
Apartment Area	1303.51 ft <sup>2</sup>	833.13 ft <sup>2</sup>	558.65 ft <sup>2</sup>	921.39 ft <sup>2</sup>
Winter Garden	81.81 ft <sup>2</sup>	77.5 ft <sup>2</sup>	57.05 ft <sup>2</sup>	113.02 ft <sup>2</sup>
<b>Total Area</b>	<b>1385.31 ft<sup>2</sup></b>	<b>910.63 ft<sup>2</sup></b>	<b>615.7 ft<sup>2</sup></b>	<b>1034.41 ft<sup>2</sup></b>

	UNIT 05 1B-C.1	UNIT 06 1B-D.1	UNIT 07 1B-D.2' AC
Kitchen/Living/Dining	28' 3" x 10' 8"	12' 9" x 19' / 30' 7"	11' 9" x 30' 7"
Bedroom 1	12' 5" x 9' 8"	9' 2" x 11' 4"	10' 2" x 18' 8"
Apartment Area	610.31 ft <sup>2</sup>	553.26 ft <sup>2</sup>	607.08 ft <sup>2</sup>
Winter Garden	62.43 ft <sup>2</sup>	243.26 ft <sup>2</sup>	103.33 ft <sup>2</sup>
<b>Total Area</b>	<b>672.74 ft<sup>2</sup></b>	<b>796.53 ft<sup>2</sup></b>	<b>710.42 ft<sup>2</sup></b>

# LEVELS 25-26

## TYPICAL FLOOR PLANS



	UNIT 01 2B-D.1	UNIT 02 2B-D.2	UNIT 03 1B-A.7'	UNIT 04 2B-E.1'	UNIT 05 2B-F.1'
Kitchen/Living/Dining	23' x 18' 4"	23' 8" x 16' 9"	23' 8" x 11' 1"	21' 2" / 26' 6" x 10' 3" / 15' 7"	10' 7" / 19' 2" x 14' 7"
Bedroom 1	9' 3" x 12' 6"	9' 7" x 12' 3" / 19' 9"	19' 5" x 9' 2"	18' 8" x 9' 8"	11' 2" / 19' 1" x 9' 1"
Bedroom 2	9' 1" x 11' 6"	16' 6" x 9'	-	13' 1" x 9' 8"	9' 9" x 10' 6"
Apartment Area	869.72 ft <sup>2</sup>	906.32 ft <sup>2</sup>	585.56 ft <sup>2</sup>	787.92 ft <sup>2</sup>	730.87 ft <sup>2</sup>
Winter Garden	94.72 ft <sup>2</sup>	106.56 ft <sup>2</sup>	30.14 ft <sup>2</sup>	60.28 ft <sup>2</sup>	36.6 ft <sup>2</sup>
<b>Total Area</b>	<b>964.45 ft<sup>2</sup></b>	<b>1012.88 ft<sup>2</sup></b>	<b>615.7 ft<sup>2</sup></b>	<b>848.2 ft<sup>2</sup></b>	<b>767.47 ft<sup>2</sup></b>

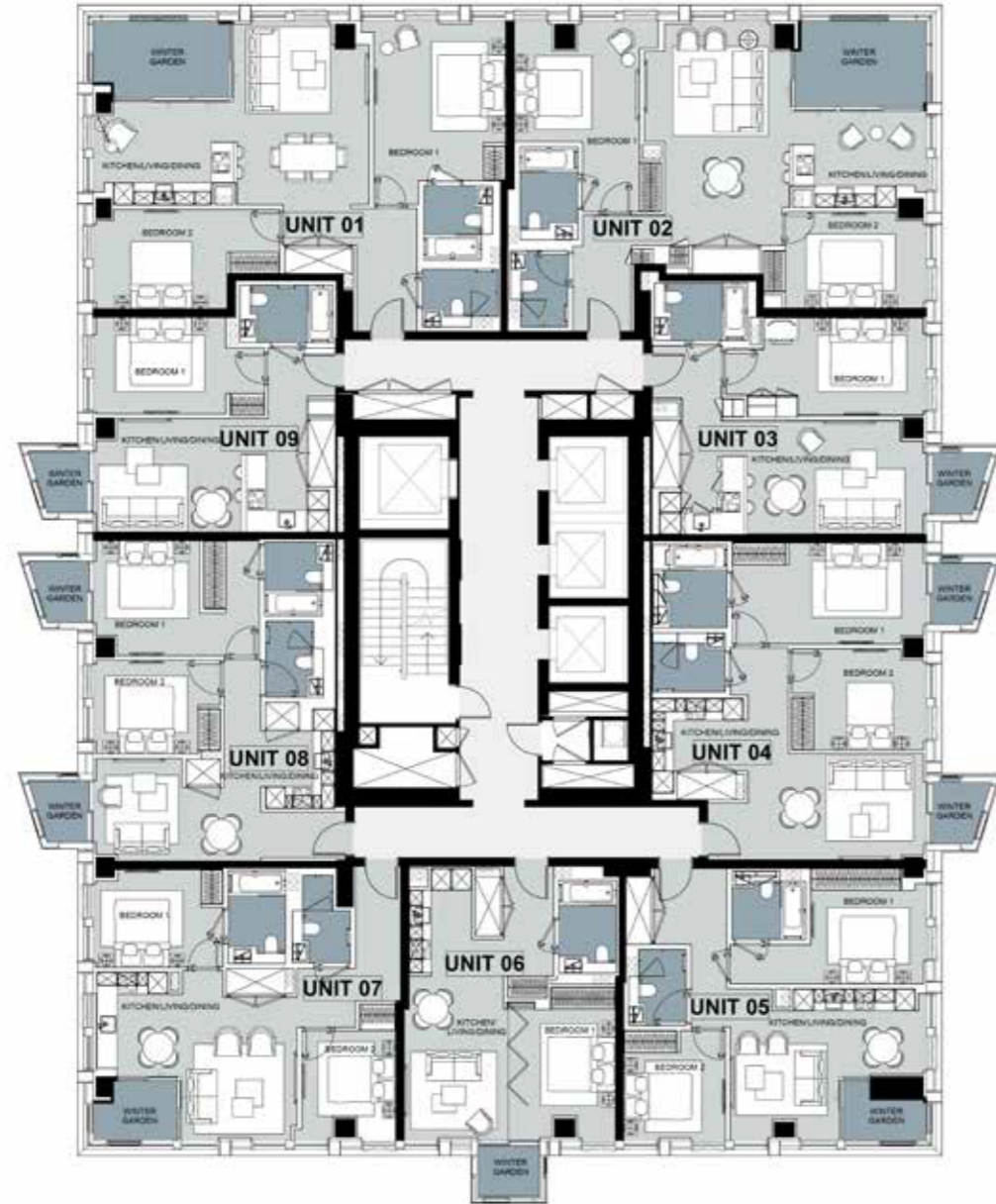
	UNIT 06 1B-A.8'	UNIT 07 2B-F.2'	UNIT 08 2B-E.2'	UNIT 09 2B-G.1
Kitchen/Living/Dining	9' 2" x 26' 4"	19' 8" x 16' 5"	16' 3" / 23' 5" x 9' 9" / 12' 6"	23' 4" x 10' 4"
Bedroom 1	10' 4" x 12' 7"	12' 6" x 9' 5"	16' 1" x 11' 2"	9' 8" / 15' 6" x 9' 3"
Bedroom 2	-	9' 1" x 10' 6"	12' 3" x 9' 1"	11' 2" x 9'
Apartment Area	540.35 ft <sup>2</sup>	736.25 ft <sup>2</sup>	735.17 ft <sup>2</sup>	728.72 ft <sup>2</sup>
Winter Garden	31.22 ft <sup>2</sup>	39.83 ft <sup>2</sup>	59.2 ft <sup>2</sup>	29.06 ft <sup>2</sup>
<b>Total Area</b>	<b>571.56 ft<sup>2</sup></b>	<b>776.08 ft<sup>2</sup></b>	<b>794.38 ft<sup>2</sup></b>	<b>757.78 ft<sup>2</sup></b>

ALL SPECIFICATIONS, PICTURES, DIAGRAMS, LAYOUTS, PHOTOGRAPHS AND OTHER GRAPHIC MATERIAL USED ARE FOR ILLUSTRATIVE PURPOSES ONLY. LAYOUTS AND INDIVIDUAL FEATURES, SPECIFICATIONS AND ITEMS MAY VARY OR BE SUBSTITUTED FOR REPLACEMENT LAYOUTS, FEATURES, SPECIFICATIONS OR ITEMS OF EQUIVALENT STANDARD AND STYLE. THE ABOVE MATERIAL IS CORRECT AT THE TIME OF PRINT BUT MAY BE SUBJECT TO CHANGE AS NECESSARY AND WITHOUT NOTICE. SPECIFICATIONS ARE INDICATIVE OF THE QUALITY AND STYLE OF THE SPECIFICATION ONLY AND MAY NOT REPRESENT WHOLLY THE ACTUAL SPECIFICATIONS AT THE DEVELOPMENT. SPECIFICATIONS AND GRAPHIC MATERIALS ARE NOT INTENDED TO FORM PART OF ANY CONTRACT OR WARRANTY UNLESS SPECIFICALLY INCORPORATED IN WRITING INTO THE CONTRACT.

ALL SPECIFICATIONS, PICTURES, DIAGRAMS, LAYOUTS, PHOTOGRAPHS AND OTHER GRAPHIC MATERIAL USED ARE FOR ILLUSTRATIVE PURPOSES ONLY. LAYOUTS AND INDIVIDUAL FEATURES, SPECIFICATIONS AND ITEMS MAY VARY OR BE SUBSTITUTED FOR REPLACEMENT LAYOUTS, FEATURES, SPECIFICATIONS OR ITEMS OF EQUIVALENT STANDARD AND STYLE. THE ABOVE MATERIAL IS CORRECT AT THE TIME OF PRINT BUT MAY BE SUBJECT TO CHANGE AS NECESSARY AND WITHOUT NOTICE. SPECIFICATIONS ARE INDICATIVE OF THE QUALITY AND STYLE OF THE SPECIFICATION ONLY AND MAY NOT REPRESENT WHOLLY THE ACTUAL SPECIFICATIONS AT THE DEVELOPMENT. SPECIFICATIONS AND GRAPHIC MATERIALS ARE NOT INTENDED TO FORM PART OF ANY CONTRACT OR WARRANTY UNLESS SPECIFICALLY INCORPORATED IN WRITING INTO THE CONTRACT.

# LEVELS 27-28

## TYPICAL FLOOR PLANS



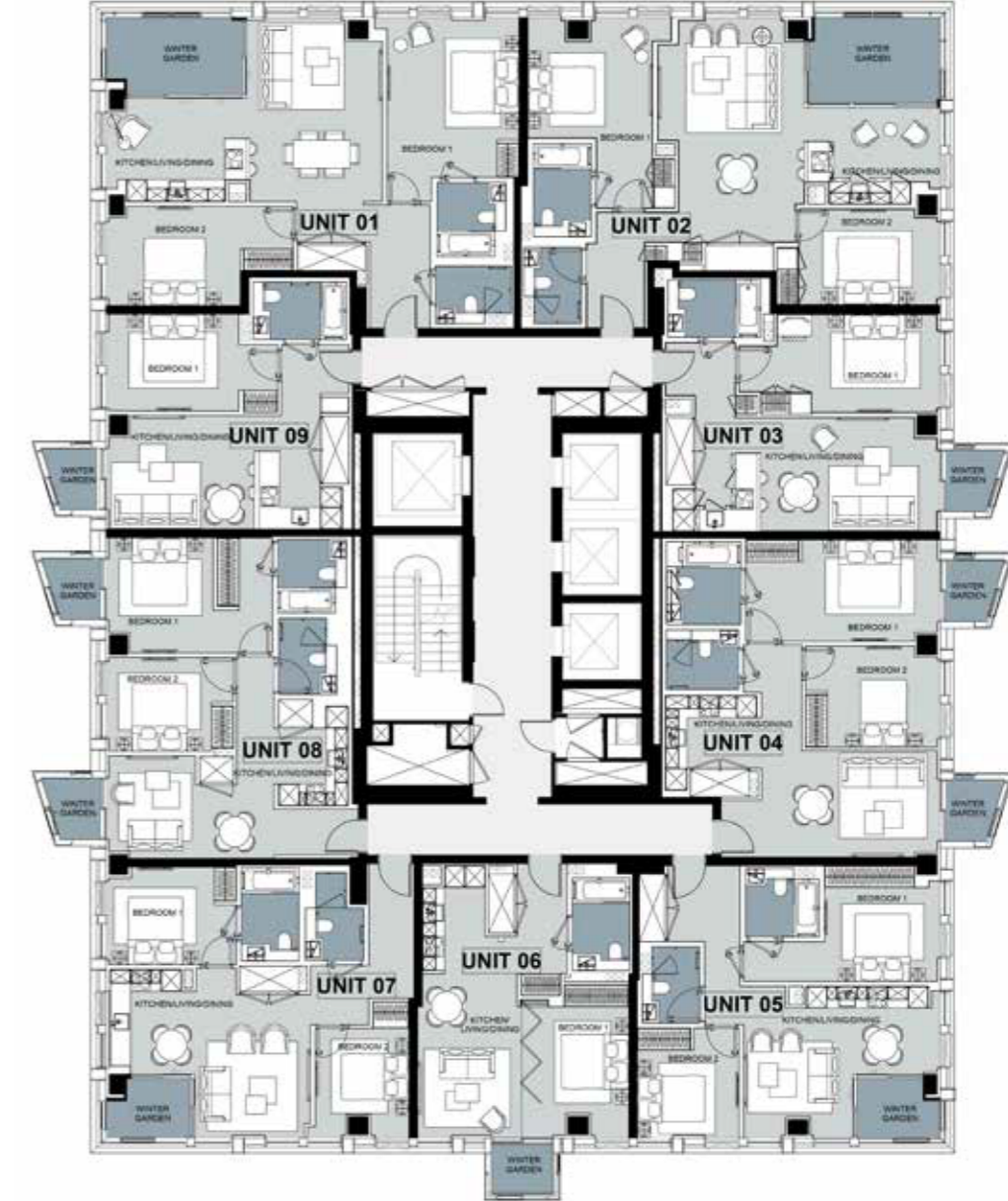
	UNIT 01 2B-D.3	UNIT 02 2B-D.4	UNIT 03 1B-A.7	UNIT 04 2B-E.1 AC	UNIT 05 2B-F.1
Kitchen/Living/Dining	26' 8" x 17' 9"	25' 4" x 9' 4" / 21' 8"	23' 8" x 11'	17' 4" / 26' 7" x 10' 3"	19' x 14' 7"
Bedroom 1	12' 8" x 15' 5"	12' 2" x 11' 7" / 18' 5"	19' 5" x 9' 5"	18' 8" x 9' 8"	11' 2" / 19' 1" x 9' 1"
Bedroom 2	13' / 18' 1" x 9' 8"	13' 8" x 9' 3"	-	13' 1" x 9' 8"	9' 9" x 8' 5" / 10' 6"
Apartment Area	990.28 ft <sup>2</sup>	990.28 ft <sup>2</sup>	589.86 ft <sup>2</sup>	790.07 ft <sup>2</sup>	729.79 ft <sup>2</sup>
Winter Garden	97.95 ft <sup>2</sup>	107.64 ft <sup>2</sup>	30.14 ft <sup>2</sup>	61.35 ft <sup>2</sup>	37.67 ft <sup>2</sup>
<b>Total Area</b>	<b>1088.23 ft<sup>2</sup></b>	<b>1097.92 ft<sup>2</sup></b>	<b>620 ft<sup>2</sup></b>	<b>851.42 ft<sup>2</sup></b>	<b>767.47 ft<sup>2</sup></b>

	UNIT 06 1B-A.8	UNIT 07 2B-F.2	UNIT 08 2B-E.2	UNIT 09 1B-E.1
Kitchen/Living/Dining	9' 2" x 26' 4"	19' 8" x 10' 2" / 16' 5"	16' 3" / 23' 5" x 10' / 12' 7"	20' 8" x 11'
Bedroom 1	10' 4" x 12' 7"	12' 6" x 9' 5"	16' 1" x 11' 2"	12' 9" x 9' 4"
Bedroom 2	-	9' 1" x 10' 6"	12' 3" x 9' 1"	-
Apartment Area	539.27 ft <sup>2</sup>	733.02 ft <sup>2</sup>	734.1 ft <sup>2</sup>	514.51 ft <sup>2</sup>
Winter Garden	30.14 ft <sup>2</sup>	43.06 ft <sup>2</sup>	59.2 ft <sup>2</sup>	29.06 ft <sup>2</sup>
<b>Total Area</b>	<b>569.41 ft<sup>2</sup></b>	<b>776.08 ft<sup>2</sup></b>	<b>793.3 ft<sup>2</sup></b>	<b>543.58 ft<sup>2</sup></b>

ALL SPECIFICATIONS, PICTURES, DIAGRAMS, LAYOUTS, PHOTOGRAPHS AND OTHER GRAPHIC MATERIAL USED ARE FOR ILLUSTRATIVE PURPOSES ONLY. LAYOUTS AND INDIVIDUAL FEATURES, SPECIFICATIONS AND ITEMS MAY VARY OR BE SUBSTITUTED FOR REPLACEMENT LAYOUTS, FEATURES, SPECIFICATIONS OR ITEMS OF EQUIVALENT STANDARD AND STYLE. THE ABOVE MATERIAL IS CORRECT AT THE TIME OF PRINT BUT MAY BE SUBJECT TO CHANGE AS NECESSARY AND WITHOUT NOTICE. SPECIFICATIONS ARE INDICATIVE OF THE QUALITY AND STYLE OF THE SPECIFICATION ONLY AND MAY NOT REPRESENT WHOLLY THE ACTUAL SPECIFICATIONS AT THE DEVELOPMENT. SPECIFICATIONS AND GRAPHIC MATERIALS ARE NOT INTENDED TO FORM PART OF ANY CONTRACT OR WARRANTY UNLESS SPECIFICALLY INCORPORATED IN WRITING INTO THE CONTRACT.

# LEVELS 29-36

## TYPICAL FLOOR PLANS



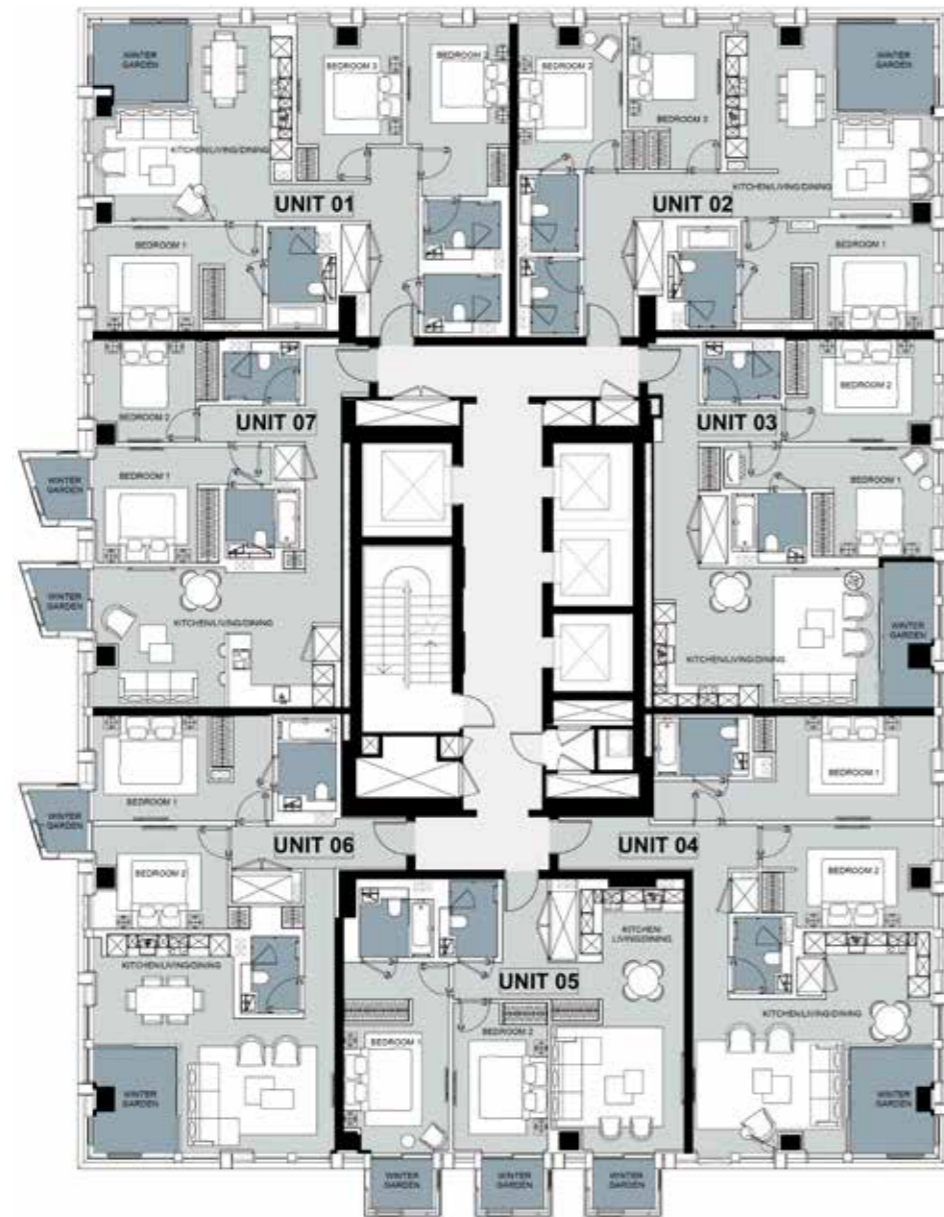
	UNIT 01 2B-D.3	UNIT 02 2B-D.4	UNIT 03 1B-A.7	UNIT 04 2B-E.1 AC	UNIT 05 2B-F.1"
Kitchen/Living/Dining	26' 8" x 17' 9"	25' 4" x 9' 4" / 21' 8"	23' 8" x 11'	17' 4" / 26' 7" x 10' 3"	19' x 14' 7"
Bedroom 1	12' 8" x 15' 5"	12' 2" x 11' 7" / 18' 5"	19' 5" x 9' 5"	18' 8" x 9' 8"	11' 2" / 19' 1" x 9' 1"
Bedroom 2	13' / 18' 1" x 9' 8"	13' 8" x 9' 3"	-	13' 1" x 9' 8"	9' 9" x 8' 5" / 10' 6"
Apartment Area	1005.35 ft <sup>2</sup>	989.2 ft <sup>2</sup>	588.79 ft <sup>2</sup>	787.92 ft <sup>2</sup>	713.65 ft <sup>2</sup>
Winter Garden	97.95 ft <sup>2</sup>	107.64 ft <sup>2</sup>	29.06 ft <sup>2</sup>	59.2 ft <sup>2</sup>	43.06 ft <sup>2</sup>
<b>Total Area</b>	<b>1103.3 ft<sup>2</sup></b>	<b>1096.84 ft<sup>2</sup></b>	<b>617.85 ft<sup>2</sup></b>	<b>847.12 ft<sup>2</sup></b>	<b>756.7 ft<sup>2</sup></b>

	UNIT 06 1B-A.8	UNIT 07 2B-F.2	UNIT 08 2B-E.2	UNIT 09 1B-E.1
Kitchen/Living/Dining	9' 2" x 26' 4"	19' 8" x 10' 2" / 16' 5"	16' 3" / 23' 5" x 10' / 12' 7"	20' 8" x 11'
Bedroom 1	10' 4" x 12' 7"	12' 6" x 9' 5"	16' 1" x 11' 2"	12' 9" x 9' 4"
Bedroom 2	-	9' 1" x 10' 6"	12' 3" x 9' 1"	-
Apartment Area	538.2 ft <sup>2</sup>	730.87 ft <sup>2</sup>	722.26 ft <sup>2</sup>	515.59 ft <sup>2</sup>
Winter Garden	30.14 ft <sup>2</sup>	43.06 ft <sup>2</sup>	59.2 ft <sup>2</sup>	30.14 ft <sup>2</sup>
<b>Total Area</b>	<b>568.33 ft<sup>2</sup></b>	<b>773.92 ft<sup>2</sup></b>	<b>781.46 ft<sup>2</sup></b>	<b>545.73 ft<sup>2</sup></b>

ALL SPECIFICATIONS, PICTURES, DIAGRAMS, LAYOUTS, PHOTOGRAPHS AND OTHER GRAPHIC MATERIAL USED ARE FOR ILLUSTRATIVE PURPOSES ONLY. LAYOUTS AND INDIVIDUAL FEATURES, SPECIFICATIONS AND ITEMS MAY VARY OR BE SUBSTITUTED FOR REPLACEMENT LAYOUTS, FEATURES, SPECIFICATIONS OR ITEMS OF EQUIVALENT STANDARD AND STYLE. THE ABOVE MATERIAL IS CORRECT AT THE TIME OF PRINT BUT MAY BE SUBJECT TO CHANGE AS NECESSARY AND WITHOUT NOTICE. SPECIFICATIONS ARE INDICATIVE OF THE QUALITY AND STYLE OF THE SPECIFICATION ONLY AND MAY NOT REPRESENT WHOLLY THE ACTUAL SPECIFICATIONS AT THE DEVELOPMENT. SPECIFICATIONS AND GRAPHIC MATERIALS ARE NOT INTENDED TO FORM PART OF ANY CONTRACT OR WARRANTY UNLESS SPECIFICALLY INCORPORATED IN WRITING INTO THE CONTRACT.

# LEVELS 37-40

## TYPICAL FLOOR PLANS



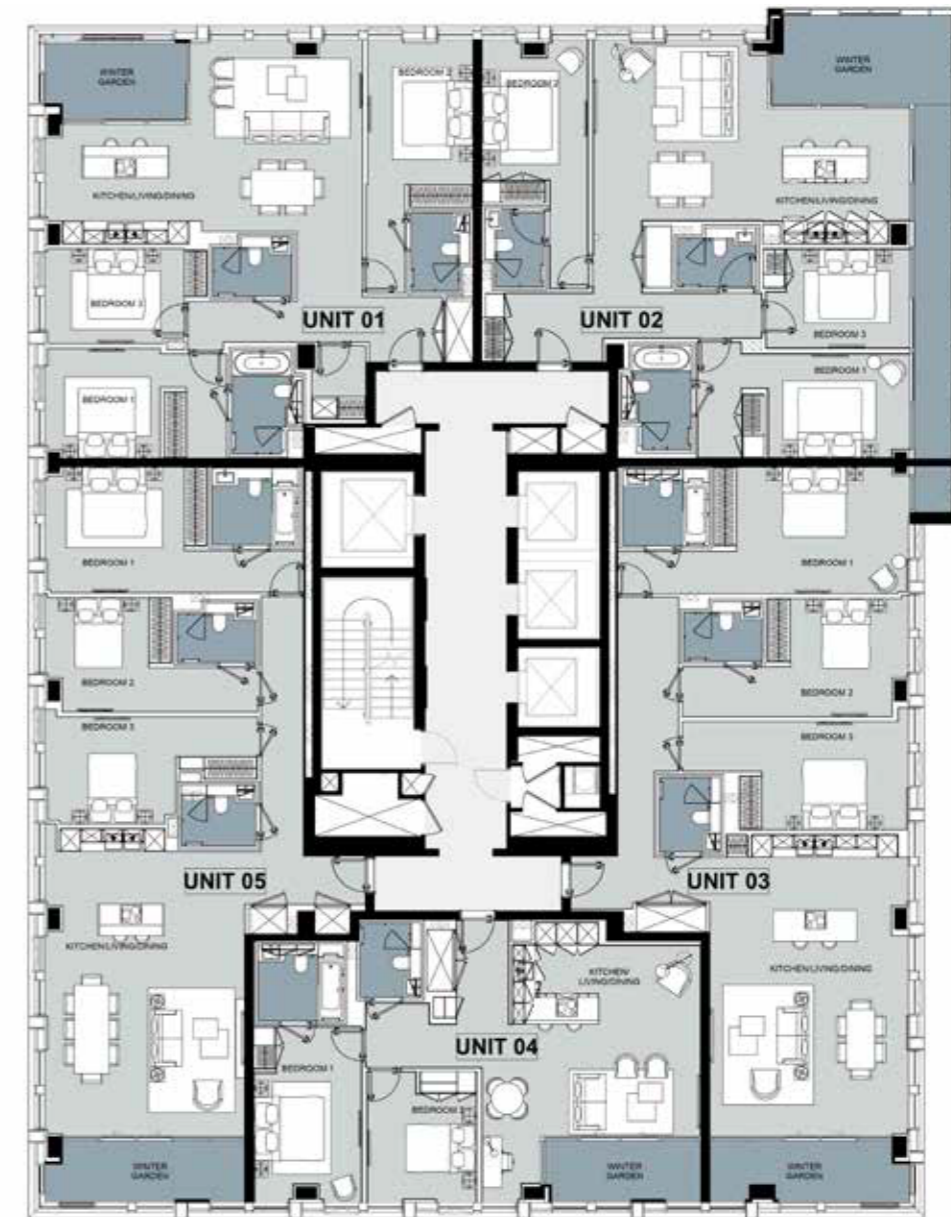
	UNIT 01 3B-C.1	UNIT 02 3B-C.2	UNIT 03 2B-E.3	UNIT 04 2B-B.3
Kitchen/Living/Dining	19' 1" x 19'	20' 1" x 18' 7"	21' 7" x 13' 4"	14' 7" / 23' 2" x 14' 8" / 21' 3"
Bedroom 1	16' 3" x 10' 1"	11' 2" / 18' 5" x 10' 2"	9' 6" / 20' 2" x 10' 6"	15' 2" / 27' x 10'
Bedroom 2	9' 8" x 16' 6"	10' x 14'	12' 2" / 14' 3" x 9' 9"	16' 6" x 9' 8"
Bedroom 3	10' 2" x 11' 6" / 15' 1"	9' x 10' / 14'	-	-
Apartment Area	1116.22 ft <sup>2</sup>	1105.45 ft <sup>2</sup>	890.17 ft <sup>2</sup>	993.51 ft <sup>2</sup>
Winter Garden	66.74 ft <sup>2</sup>	77.5 ft <sup>2</sup>	61.35 ft <sup>2</sup>	78.58 ft <sup>2</sup>
<b>Total Area</b>	<b>1182.95 ft<sup>2</sup></b>	<b>1182.95 ft<sup>2</sup></b>	<b>951.53 ft<sup>2</sup></b>	<b>1072.08 ft<sup>2</sup></b>

	UNIT 05 2B-H.1	UNIT 06 2B-B.4	UNIT 07 2B-E.4
Kitchen/Living/Dining	12' 8" x 12' 3" / 25' 3"	14' 9" / 23' 2" x 13' / 21' 1"	23' 9" x 13' 5"
Bedroom 1	10' 1" x 12' 4" / 18' 4"	11' 1" / 17' 3" x 10' 1"	10' / 17' 1" x 11' 1"
Bedroom 2	9' 1" x 14' 5"	12' 9" x 9' 9"	9' 9" x 9' 9"
Apartment Area	868.65 ft <sup>2</sup>	933.23 ft <sup>2</sup>	852.5 ft <sup>2</sup>
Winter Garden	90.42 ft <sup>2</sup>	106.56 ft <sup>2</sup>	61.35 ft <sup>2</sup>
<b>Total Area</b>	<b>959.06 ft<sup>2</sup></b>	<b>1039.79 ft<sup>2</sup></b>	<b>913.86 ft<sup>2</sup></b>

ALL SPECIFICATIONS, PICTURES, DIAGRAMS, LAYOUTS, PHOTOGRAPHS AND OTHER GRAPHIC MATERIAL USED ARE FOR ILLUSTRATIVE PURPOSES ONLY. LAYOUTS AND INDIVIDUAL FEATURES, SPECIFICATIONS AND ITEMS MAY VARY OR BE SUBSTITUTED FOR REPLACEMENT LAYOUTS, FEATURES, SPECIFICATIONS OR ITEMS OF EQUIVALENT STANDARD AND STYLE. THE ABOVE MATERIAL IS CORRECT AT THE TIME OF PRINT BUT MAY BE SUBJECT TO CHANGE AS NECESSARY AND WITHOUT NOTICE. SPECIFICATIONS ARE INDICATIVE OF THE QUALITY AND STYLE OF THE SPECIFICATION ONLY AND MAY NOT REPRESENT WHOLLY THE ACTUAL SPECIFICATIONS AT THE DEVELOPMENT. SPECIFICATIONS AND GRAPHIC MATERIALS ARE NOT INTENDED TO FORM PART OF ANY CONTRACT OR WARRANTY UNLESS SPECIFICALLY INCORPORATED IN WRITING INTO THE CONTRACT.

# LEVEL 41

## FLOOR PLAN



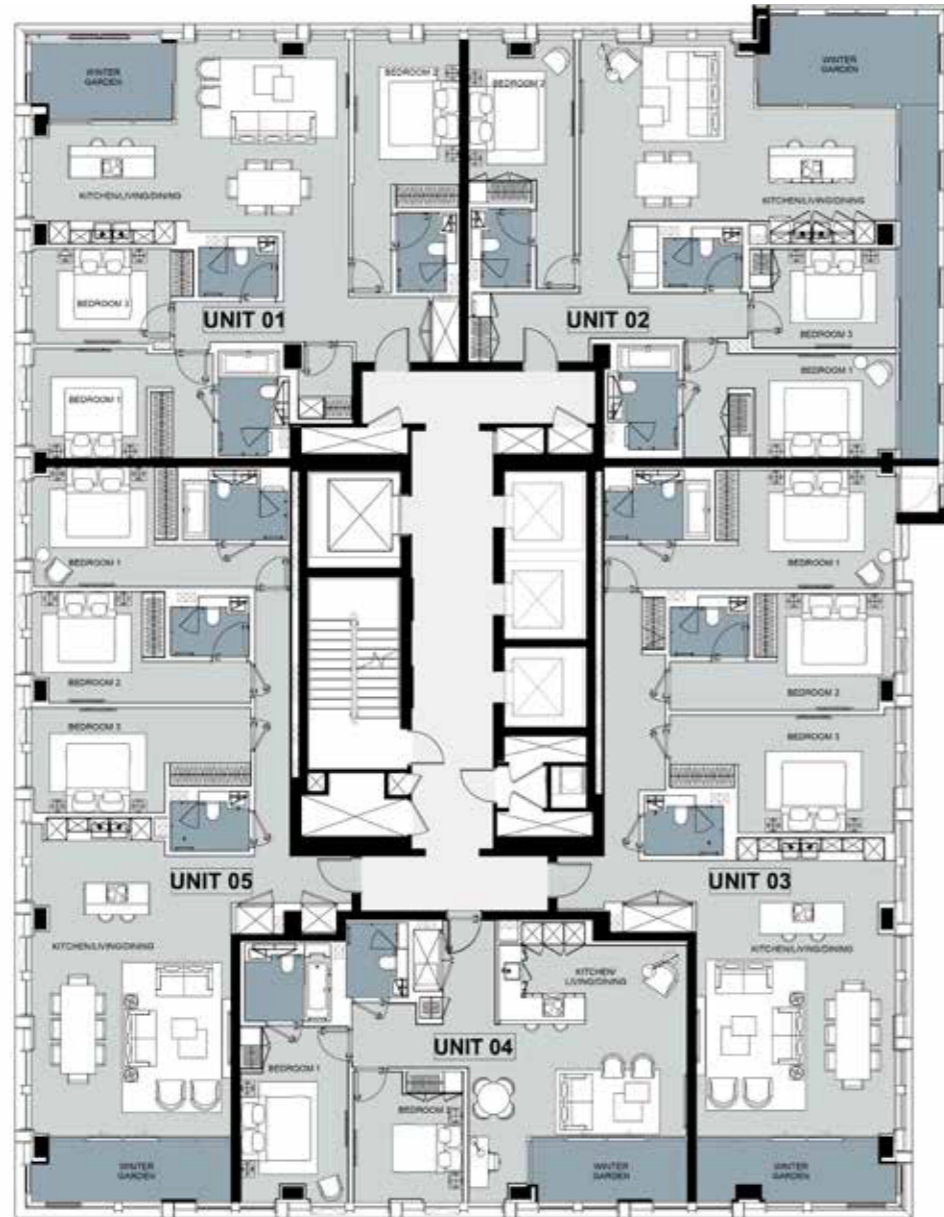
	UNIT 01 3B-D.1	UNIT 02 3B-D.2	UNIT 03 3B-E.1 AC	UNIT 04 2B-1.1 AC	UNIT 05 3B-E.2 AC
Kitchen/Living/Dining	29' 7" x 17' 9"	29' 5" x 16' 9"	18' 7" x 28' 2"	17' 9" x 20' 4"	18' 7" x 28' 8"
Bedroom 1	10' 8" / 17' x 10' 2"	13' 2" / 19' 8" x 9' 7"	16' 2" / 27' 3" x 11' 8"	16' 4" x 10' 1"	12' 9" x 9' 4"
Bedroom 2	9' 8" x 13' 5" / 23' 7"	9' 9" x 13' 1" / 23' 3"	11' 1" / 21' 3" x 11' 1"	10' 1" / 12' 2" x 10' 3"	9' 7" / 19' 9" x 10' 7"
Bedroom 3	13' 1" x 8' 9"	11' 6" / 13' 4" x 9' 3"	13' 8" / 21' 3" x 10' 1"	-	12' 2" / 19' 9" x 10'
Apartment Area	1342.26 ft <sup>2</sup>	1372.4 ft <sup>2</sup>	1571.53 ft <sup>2</sup>	976.29 ft <sup>2</sup>	1454.2 ft <sup>2</sup>
Winter Garden	104.41 ft <sup>2</sup>	263.72 ft <sup>2</sup>	116.25 ft <sup>2</sup>	81.81 ft <sup>2</sup>	103.33 ft <sup>2</sup>
<b>Total Area</b>	<b>1446.67 ft<sup>2</sup></b>	<b>1636.11 ft<sup>2</sup></b>	<b>1687.78 ft<sup>2</sup></b>	<b>1058.09 ft<sup>2</sup></b>	<b>1557.54 ft<sup>2</sup></b>

ALL SPECIFICATIONS, PICTURES, DIAGRAMS, LAYOUTS, PHOTOGRAPHS AND OTHER GRAPHIC MATERIAL USED ARE FOR ILLUSTRATIVE PURPOSES ONLY. LAYOUTS AND INDIVIDUAL FEATURES, SPECIFICATIONS AND ITEMS MAY VARY OR BE SUBSTITUTED FOR REPLACEMENT LAYOUTS, FEATURES, SPECIFICATIONS OR ITEMS OF EQUIVALENT STANDARD AND STYLE. THE ABOVE MATERIAL IS CORRECT AT THE TIME OF PRINT BUT MAY BE SUBJECT TO CHANGE AS NECESSARY AND WITHOUT NOTICE. SPECIFICATIONS ARE INDICATIVE OF THE QUALITY AND STYLE OF THE SPECIFICATION ONLY AND MAY NOT REPRESENT WHOLLY THE ACTUAL SPECIFICATIONS AT THE DEVELOPMENT. SPECIFICATIONS AND GRAPHIC MATERIALS ARE NOT INTENDED TO FORM PART OF ANY CONTRACT OR WARRANTY UNLESS SPECIFICALLY INCORPORATED IN WRITING INTO THE CONTRACT.



# LEVEL 42

## FLOOR PLAN

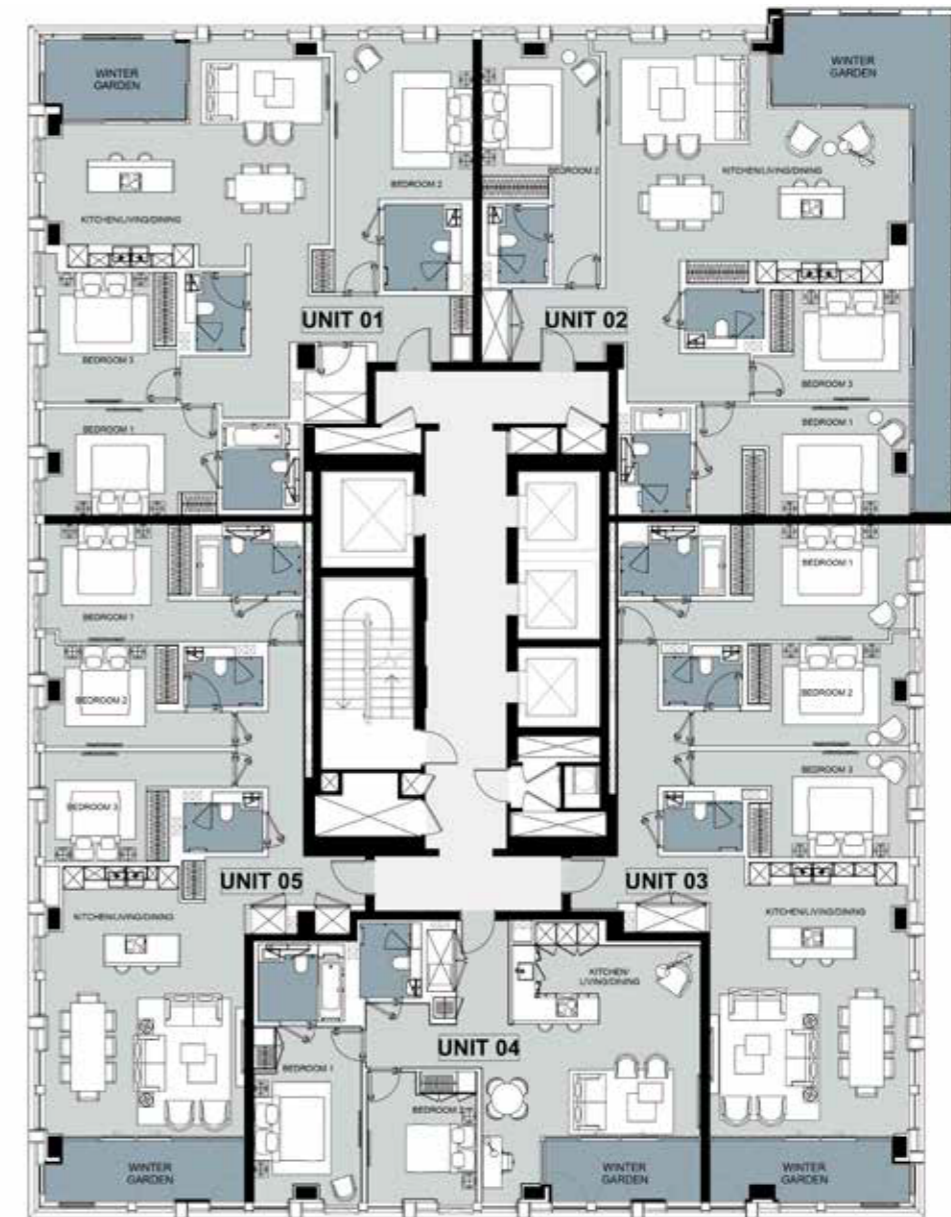


	UNIT 01 3B-D.1	UNIT 02 3B-D.2	UNIT 03 3B-E.1	UNIT 04 2B-I.1 AC	UNIT 05 3B-E.2
Kitchen/Living/Dining	29' 7" x 17' 9"	29' 5" x 16' 9"	18' 7" x 27' 9"	17' 9" x 20' 4"	18' 7" x 29' 8"
Bedroom 1	10' 8" / 17' x 10' 2"	13' 2" / 19' 8" x 9' 7"	14' 8" / 27' 3" x 11' 4"	16' 4" x 10' 1"	11' 5" / 24' 2" x 11' 2"
Bedroom 2	9' 8" x 13' 5" / 23' 7"	9' 9" x 13' 1" / 23' 3"	11' 1" / 21' 1" x 10' 9"	10' 1" / 12' 2" x 10' 3"	10' 4" / 20' 6" x 10' 5"
Bedroom 3	13' 1" x 8' 9"	11' 6" / 13' 4" x 9' 3"	14' 8" / 21' 2" x 11'	-	12' 5" / 20' 6" x 9' 8"
Apartment Area	1354.1 ft <sup>2</sup>	1365.94 ft <sup>2</sup>	1585.52 ft <sup>2</sup>	971.98 ft <sup>2</sup>	1454.2 ft <sup>2</sup>
Winter Garden	99.03 ft <sup>2</sup>	269.1 ft <sup>2</sup>	100.1 ft <sup>2</sup>	81.81 ft <sup>2</sup>	104.41 ft <sup>2</sup>
<b>Total Area</b>	<b>1453.13 ft<sup>2</sup></b>	<b>1635.04 ft<sup>2</sup></b>	<b>1685.63 ft<sup>2</sup></b>	<b>1053.79 ft<sup>2</sup></b>	<b>1558.61 ft<sup>2</sup></b>

ALL SPECIFICATIONS, PICTURES, DIAGRAMS, LAYOUTS, PHOTOGRAPHS AND OTHER GRAPHIC MATERIAL USED ARE FOR ILLUSTRATIVE PURPOSES ONLY. LAYOUTS AND INDIVIDUAL FEATURES, SPECIFICATIONS AND ITEMS MAY VARY OR BE SUBSTITUTED FOR REPLACEMENT LAYOUTS, FEATURES, SPECIFICATIONS OR ITEMS OF EQUIVALENT STANDARD AND STYLE. THE ABOVE MATERIAL IS CORRECT AT THE TIME OF PRINT BUT MAY BE SUBJECT TO CHANGE AS NECESSARY AND WITHOUT NOTICE. SPECIFICATIONS ARE INDICATIVE OF THE QUALITY AND STYLE OF THE SPECIFICATION ONLY AND MAY NOT REPRESENT WHOLLY THE ACTUAL SPECIFICATIONS AT THE DEVELOPMENT. SPECIFICATIONS AND GRAPHIC MATERIALS ARE NOT INTENDED TO FORM PART OF ANY CONTRACT OR WARRANTY UNLESS SPECIFICALLY INCORPORATED IN WRITING INTO THE CONTRACT.

# LEVELS 43-45

## TYPICAL FLOOR PLANS

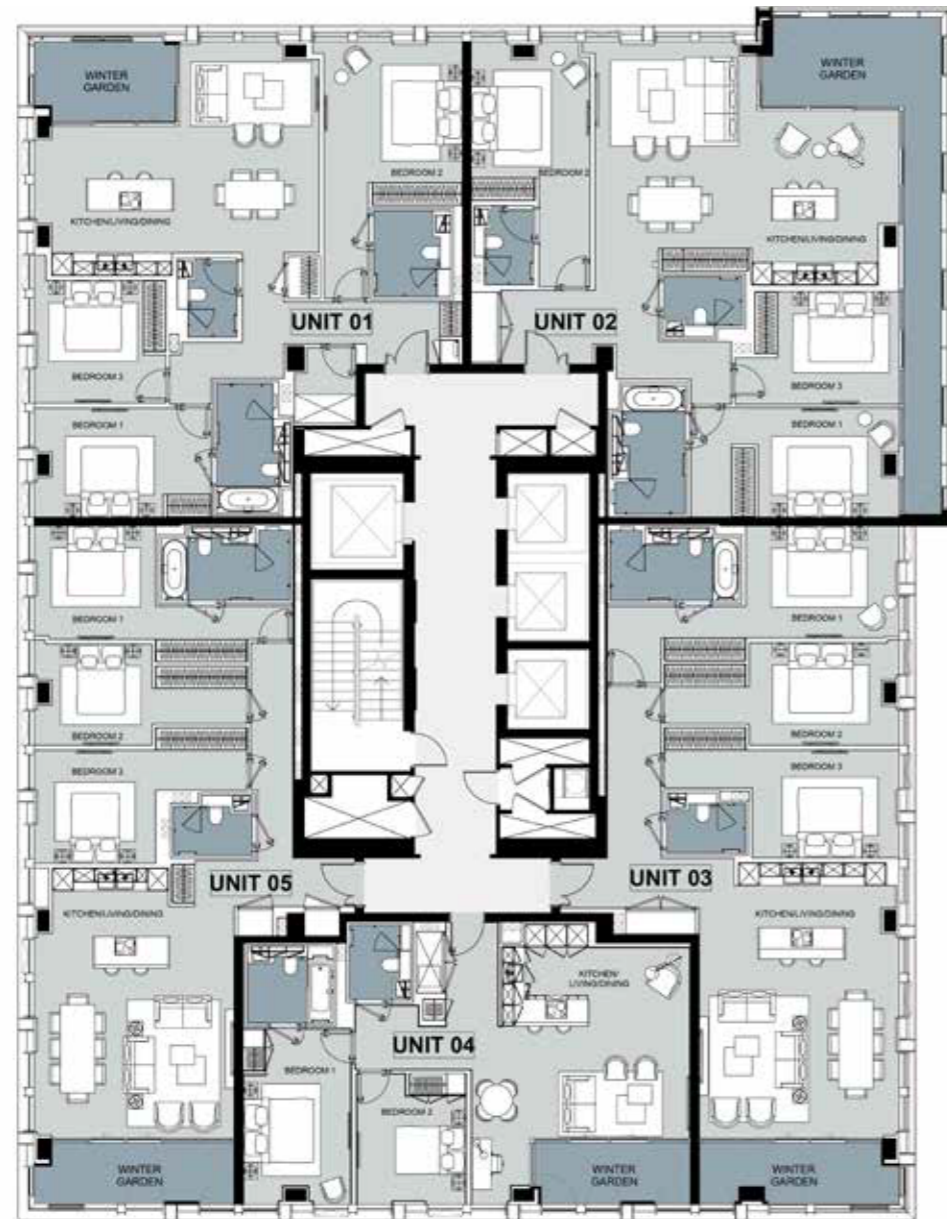


	UNIT 01 3B-D.3 AC	UNIT 02 3B-D.4	UNIT 03 3B-E.3	UNIT 04 2B-I.1 AC	UNIT 05 3B-E.4
Kitchen/Living/Dining	26' 6" x 21' 3"	28' 4" x 20' 7"	18' 7" x 25' 6"	17' 9" x 20' 4"	18' 7" x 25' 2"
Bedroom 1	16' 1" x 10' 3"	13' 2" / 20' x 10' 2"	14' 6" / 27' 3" x 10' 9"	16' 4" x 10' 1"	11' 6" / 24' 2" x 11'
Bedroom 2	12' 9" x 14' 9" / 23' 6"	11' 1" x 12' 8" / 22' 9"	13' / 20' 3" x 9' 5"	10' 1" / 12' 2" x 10' 3"	10' 4" / 17' 6" x 9' 5"
Bedroom 3	12' 3" x 12' 2"	10' 9" / 14' 6" x 10' 4"	12' 9" / 20' 2" x 10'	-	9' 5" / 17' 6" x 10' 3"
Apartment Area	1480.04 ft <sup>2</sup>	1531.7 ft <sup>2</sup>	1419.76 ft <sup>2</sup>	973.06 ft <sup>2</sup>	1328.27 ft <sup>2</sup>
Winter Garden	95.8 ft <sup>2</sup>	269.1 ft <sup>2</sup>	105.49 ft <sup>2</sup>	83.96 ft <sup>2</sup>	104.41 ft <sup>2</sup>
<b>Total Area</b>	<b>1575.83 ft<sup>2</sup></b>	<b>1800.8 ft<sup>2</sup></b>	<b>1525.24 ft<sup>2</sup></b>	<b>1057.01 ft<sup>2</sup></b>	<b>1432.68 ft<sup>2</sup></b>

ALL SPECIFICATIONS, PICTURES, DIAGRAMS, LAYOUTS, PHOTOGRAPHS AND OTHER GRAPHIC MATERIAL USED ARE FOR ILLUSTRATIVE PURPOSES ONLY. LAYOUTS AND INDIVIDUAL FEATURES, SPECIFICATIONS AND ITEMS MAY VARY OR BE SUBSTITUTED FOR REPLACEMENT LAYOUTS, FEATURES, SPECIFICATIONS OR ITEMS OF EQUIVALENT STANDARD AND STYLE. THE ABOVE MATERIAL IS CORRECT AT THE TIME OF PRINT BUT MAY BE SUBJECT TO CHANGE AS NECESSARY AND WITHOUT NOTICE. SPECIFICATIONS ARE INDICATIVE OF THE QUALITY AND STYLE OF THE SPECIFICATION ONLY AND MAY NOT REPRESENT WHOLLY THE ACTUAL SPECIFICATIONS AT THE DEVELOPMENT. SPECIFICATIONS AND GRAPHIC MATERIALS ARE NOT INTENDED TO FORM PART OF ANY CONTRACT OR WARRANTY UNLESS SPECIFICALLY INCORPORATED IN WRITING INTO THE CONTRACT.

# LEVELS 46-47

## TYPICAL FLOOR PLANS

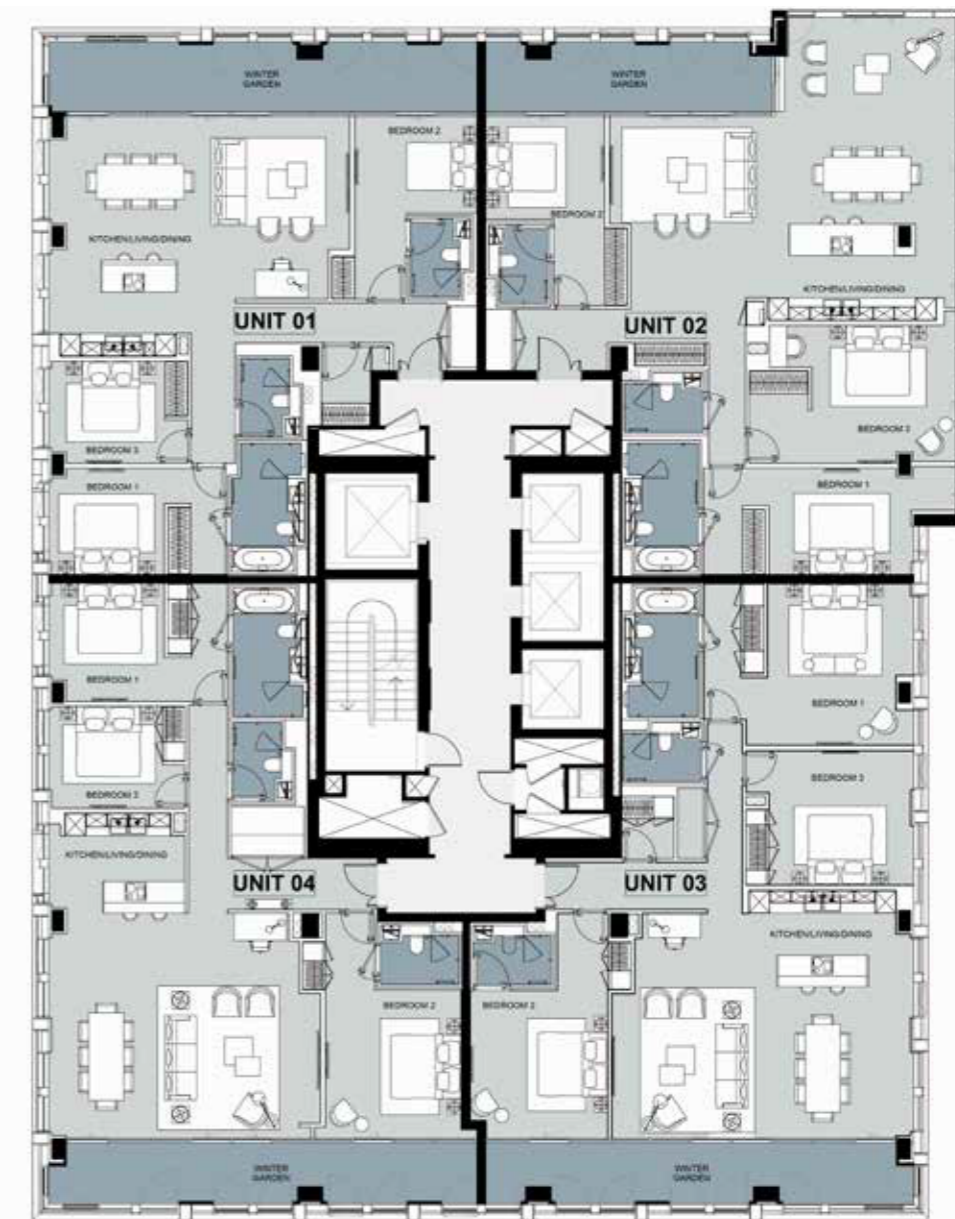


	UNIT 01 3B-D.5	UNIT 02 3B-D.6	UNIT 03 3B-E.5	UNIT 04 2B-I.1	UNIT 05 3B-E.6
Kitchen/Living/Dining	26' 6" x 19' 7"	28' 4" x 19' 3"	18' 7" x 25' 8"	17' 9" x 20' 4"	18' 7" x 25' 2"
Bedroom 1	16' 5" x 10' 2"	13' 2" / 19' 5" x 10' 2"	14' 3" / 27' 3" x 10' 5"	16' 4" x 10' 1"	11' 3" / 24' 2" x 10' 6"
Bedroom 2	12' 9" x 13' 2" / 24'	11' 1" x 12' 7" / 22' 9"	14' / 22' x 9' 6"	10' 1" / 12' 2" x 10' 3"	11' / 19' 9" x 9' 4"
Bedroom 3	12' 3" x 11' 5"	11' 4" / 15' 4" x 10' 5"	13' 8" / 21' 9" x 10' 1"	-	12' 5" / 20' 6" x 9' 8"
Apartment Area	1475.73 ft <sup>2</sup>	1525.24 ft <sup>2</sup>	1425.14 ft <sup>2</sup>	980.59 ft <sup>2</sup>	1326.11 ft <sup>2</sup>
Winter Garden	97.95 ft <sup>2</sup>	271.25 ft <sup>2</sup>	101.18 ft <sup>2</sup>	81.81 ft <sup>2</sup>	104.41 ft <sup>2</sup>
<b>Total Area</b>	<b>1573.68 ft<sup>2</sup></b>	<b>1796.49 ft<sup>2</sup></b>	<b>1526.32 ft<sup>2</sup></b>	<b>1062.4 ft<sup>2</sup></b>	<b>1430.52 ft<sup>2</sup></b>

ALL SPECIFICATIONS, PICTURES, DIAGRAMS, LAYOUTS, PHOTOGRAPHS AND OTHER GRAPHIC MATERIAL USED ARE FOR ILLUSTRATIVE PURPOSES ONLY. LAYOUTS AND INDIVIDUAL FEATURES, SPECIFICATIONS AND ITEMS MAY VARY OR BE SUBSTITUTED FOR REPLACEMENT LAYOUTS, FEATURES, SPECIFICATIONS OR ITEMS OF EQUIVALENT STANDARD AND STYLE. THE ABOVE MATERIAL IS CORRECT AT THE TIME OF PRINT BUT MAY BE SUBJECT TO CHANGE AS NECESSARY AND WITHOUT NOTICE. SPECIFICATIONS ARE INDICATIVE OF THE QUALITY AND STYLE OF THE SPECIFICATION ONLY AND MAY NOT REPRESENT WHOLLY THE ACTUAL SPECIFICATIONS AT THE DEVELOPMENT. SPECIFICATIONS AND GRAPHIC MATERIALS ARE NOT INTENDED TO FORM PART OF ANY CONTRACT OR WARRANTY UNLESS SPECIFICALLY INCORPORATED IN WRITING INTO THE CONTRACT.

# LEVEL 48

## FLOOR PLAN

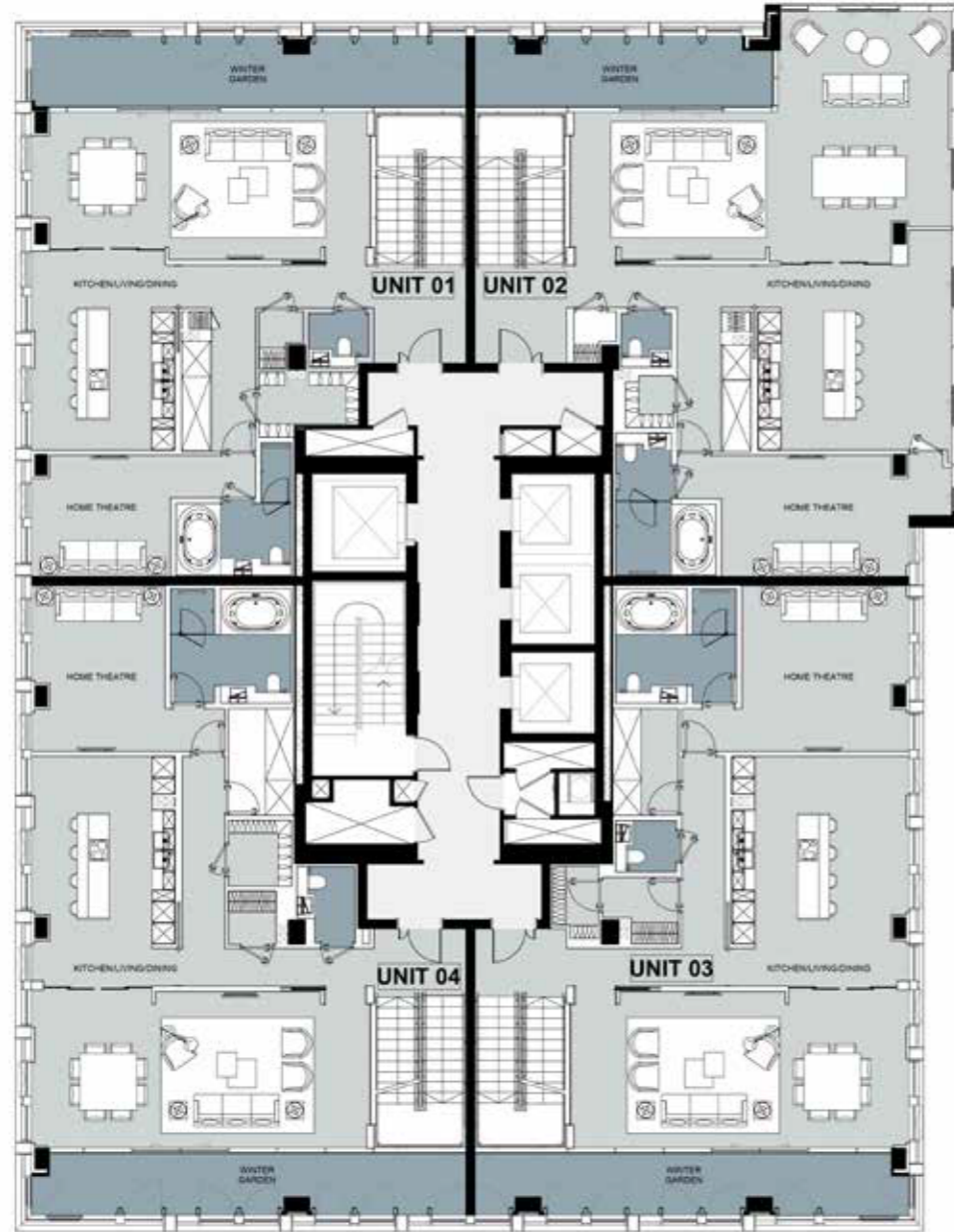


	UNIT 01 3B-F.1	UNIT 02 3B-F.2	UNIT 03 3B-G.1	UNIT 04 3B-G.2
Kitchen/Living/Dining	28' 1" x 17' 1" / 22' 5"	30' 4" x 28' 3"	28' 3" x 23' 2"	25' 4" x 30' 4"
Bedroom 1	10' 8" / 16' 5" x 9' 9"	13' 6" / 19' 7" x 9' 9"	13' 6" / 19' 6" x 15' 1"	10' 8" / 16' 7" x 11'
Bedroom 2	11' 4" x 9' / 17' 1"	11' 1" x 9' 6" / 17' 7"	12' 8" x 13' 8" / 21'	12' 7" x 13' 9" / 21'
Bedroom 3	10' 9" / 13' x 9' 5"	13' 4" / 19' 3" x 12' 9"	13' 6" / 15' 6" x 12' 5"	10' 6" / 12' 8" x 9' 5"
Apartment Area	1463.89 ft <sup>2</sup>	1782.5 ft <sup>2</sup>	1757.74 ft <sup>2</sup>	1608.13 ft <sup>2</sup>
Winter Garden	257.26 ft <sup>2</sup>	167.92 ft <sup>2</sup>	220.66 ft <sup>2</sup>	221.74 ft <sup>2</sup>
<b>Total Area</b>	<b>1721.15 ft<sup>2</sup></b>	<b>1950.42 ft<sup>2</sup></b>	<b>1978.4 ft<sup>2</sup></b>	<b>1829.86 ft<sup>2</sup></b>

ALL SPECIFICATIONS, PICTURES, DIAGRAMS, LAYOUTS, PHOTOGRAPHS AND OTHER GRAPHIC MATERIAL USED ARE FOR ILLUSTRATIVE PURPOSES ONLY. LAYOUTS AND INDIVIDUAL FEATURES, SPECIFICATIONS AND ITEMS MAY VARY OR BE SUBSTITUTED FOR REPLACEMENT LAYOUTS, FEATURES, SPECIFICATIONS OR ITEMS OF EQUIVALENT STANDARD AND STYLE. THE ABOVE MATERIAL IS CORRECT AT THE TIME OF PRINT BUT MAY BE SUBJECT TO CHANGE AS NECESSARY AND WITHOUT NOTICE. SPECIFICATIONS ARE INDICATIVE OF THE QUALITY AND STYLE OF THE SPECIFICATION ONLY AND MAY NOT REPRESENT WHOLLY THE ACTUAL SPECIFICATIONS AT THE DEVELOPMENT. SPECIFICATIONS AND GRAPHIC MATERIALS ARE NOT INTENDED TO FORM PART OF ANY CONTRACT OR WARRANTY UNLESS SPECIFICALLY INCORPORATED IN WRITING INTO THE CONTRACT.

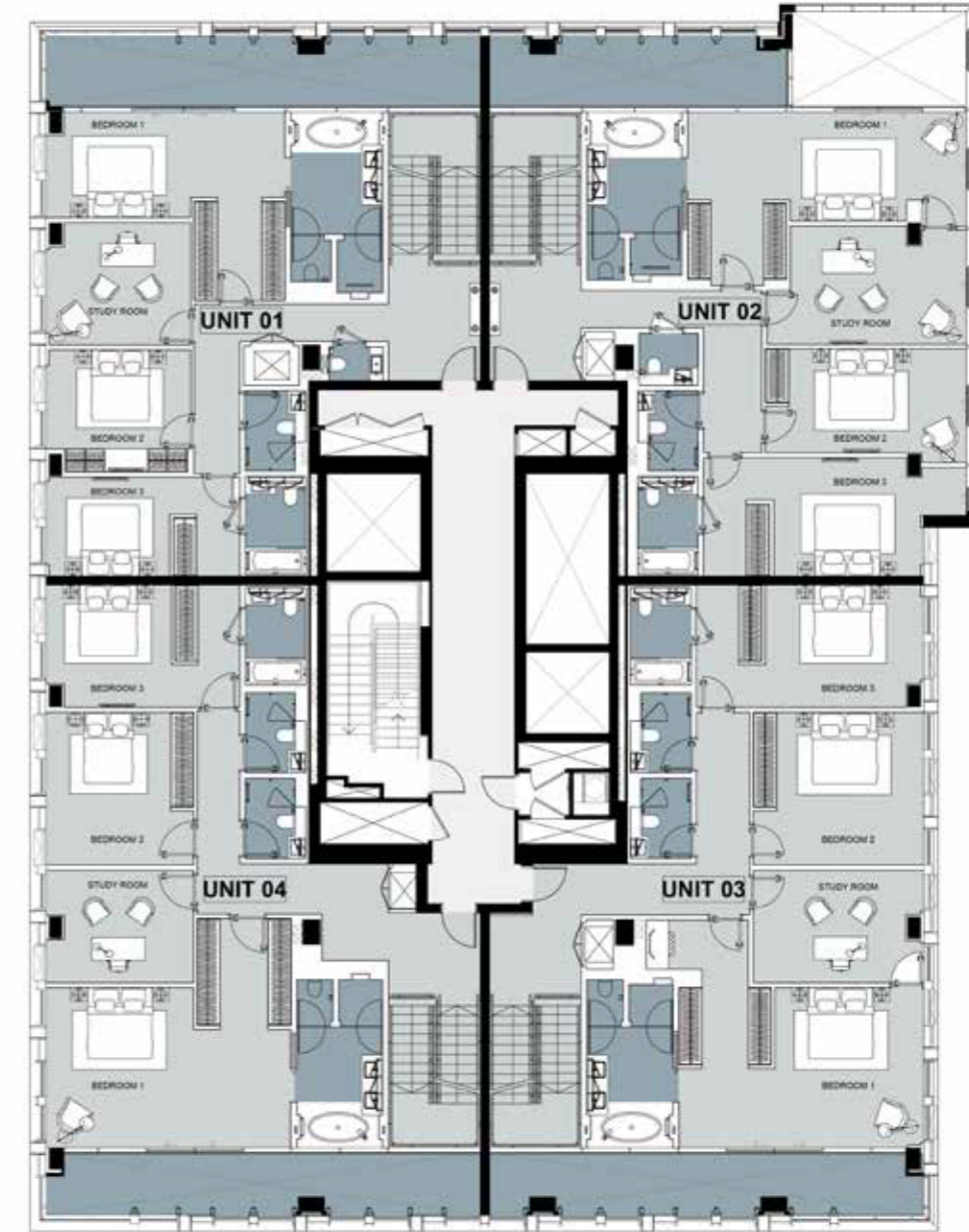
# LEVEL 49

## LOWER DUPLEX PLAN



# LEVEL 50

## UPPER DUPLEX PLAN



	UNIT 01 PH-1	UNIT 02 PH-2
Kitchen/Living/Dining	13' 2" / 31' 2" x 31' 2"	17' 9" / 35' 1" x 31' 2" / 40' 4"
Home Theatre	12' 8" / 20' 6" x 11' 2"	17' 3" / 25' 3" x 11' 2"
Study Room	13' 3" x 11' 3"	18' 4" x 10' 9"
Bedroom 1	13' 3" / 22' x 9' 8"	16' 2" / 25' 7" x 10' 1" / 16'
Bedroom 2	11' 3" x 9' 1"	18' 5" x 9' 6"
Bedroom 3	11' 4" / 17' 9" x 9' 1"	13' 8" / 24' 2" x 10' 9"
Apartment Area	2857.82 ft <sup>2</sup>	3382.02 ft <sup>2</sup>
Winter Garden	256.18 ft <sup>2</sup>	173.3 ft <sup>2</sup>
<b>Total Area</b>	<b>3114 ft<sup>2</sup></b>	<b>3555.32 ft<sup>2</sup></b>

	UNIT 01 PH-3	UNIT 02 PH-4
Kitchen/Living/Dining	16' 4" / 31' 2" x 36' 1"	16' 4" / 31' 2" x 36' 1"
Home Theatre	15' 4" x 15' 3"	15' 4" x 15' 3"
Study Room	15' 7" x 10' 4"	15' 7" x 10' 4"
Bedroom 1	13' 7" / 22' 5" x 14' 8"	13' 7" / 22' 5" x 14' 8"
Bedroom 2	13' 5" x 14' 1"	13' 5" x 14' 1"
Bedroom 3	14' 6" / 20' 9" x 11' 3"	14' 6" / 20' 9" x 11' 3"
Apartment Area	3448.75 ft <sup>2</sup>	3448.75 ft <sup>2</sup>
Winter Garden	215.28 ft <sup>2</sup>	215.28 ft <sup>2</sup>
<b>Total Area</b>	<b>3664.03 ft<sup>2</sup></b>	<b>3664.03 ft<sup>2</sup></b>

ALL SPECIFICATIONS, PICTURES, DIAGRAMS, LAYOUTS, PHOTOGRAPHS AND OTHER GRAPHIC MATERIAL USED ARE FOR ILLUSTRATIVE PURPOSES ONLY. LAYOUTS AND INDIVIDUAL FEATURES, SPECIFICATIONS AND ITEMS MAY VARY OR BE SUBSTITUTED FOR REPLACEMENT LAYOUTS, FEATURES, SPECIFICATIONS OR ITEMS OF EQUIVALENT STANDARD AND STYLE. THE ABOVE MATERIAL IS CORRECT AT THE TIME OF PRINT BUT MAY BE SUBJECT TO CHANGE AS NECESSARY AND WITHOUT NOTICE. SPECIFICATIONS ARE INDICATIVE OF THE QUALITY AND STYLE OF THE SPECIFICATION ONLY AND MAY NOT REPRESENT WHOLLY THE ACTUAL SPECIFICATIONS AT THE DEVELOPMENT. SPECIFICATIONS AND GRAPHIC MATERIALS ARE NOT INTENDED TO FORM PART OF ANY CONTRACT OR WARRANTY UNLESS SPECIFICALLY INCORPORATED IN WRITING INTO THE CONTRACT.

ALL SPECIFICATIONS, PICTURES, DIAGRAMS, LAYOUTS, PHOTOGRAPHS AND OTHER GRAPHIC MATERIAL USED ARE FOR ILLUSTRATIVE PURPOSES ONLY. LAYOUTS AND INDIVIDUAL FEATURES, SPECIFICATIONS AND ITEMS MAY VARY OR BE SUBSTITUTED FOR REPLACEMENT LAYOUTS, FEATURES, SPECIFICATIONS OR ITEMS OF EQUIVALENT STANDARD AND STYLE. THE ABOVE MATERIAL IS CORRECT AT THE TIME OF PRINT BUT MAY BE SUBJECT TO CHANGE AS NECESSARY AND WITHOUT NOTICE. SPECIFICATIONS ARE INDICATIVE OF THE QUALITY AND STYLE OF THE SPECIFICATION ONLY AND MAY NOT REPRESENT WHOLLY THE ACTUAL SPECIFICATIONS AT THE DEVELOPMENT. SPECIFICATIONS AND GRAPHIC MATERIALS ARE NOT INTENDED TO FORM PART OF ANY CONTRACT OR WARRANTY UNLESS SPECIFICALLY INCORPORATED IN WRITING INTO THE CONTRACT.



# UNIT PLANS

# STUDIO

UNIT PLAN



D A M A C T O W E R



N I N E E L M S

# 1 BEDROOM

UNIT PLAN



D A M A C T O W E R



N I N E E L M S

# 2 BEDROOM

UNIT PLAN



D A M A C T O W E R

# 3 BEDROOM

UNIT PLAN



D A M A C T O W E R



N I N E E L M S



N I N E E L M S

# DUPLEX LOWER

UNIT PLAN



N I N E E L M S

# DUPLEX UPPER

UNIT PLAN



N I N E E L M S

D A M A C T O W E R

D A M A C T O W E R



# APARTMENT FEATURES



## INTERIOR FINISHES – GENERAL AREAS

- Timber entrance doors
- PU finish skirting
- Wood flooring to living and kitchen areas
- Feature stone flooring to hallway
- Polished stainless steel finish door fittings throughout
- Walls, ceilings and coving finished in white matt paint

## MASTER BEDROOM

- Fully fitted wardrobes with PU finish and internal light
- Wood flooring
- Designer wallpaper for the feature wall in units with two or more bedrooms

## GUEST BEDROOM

- Fully fitted wardrobes with PU finish
- Wood flooring

## UTILITY CUPBOARD

- Bespoke PU finish joinery doors
- Combination washer / dryer
- Tiled flooring

## KITCHEN

- Kitchen with lacquered unit doors to match the overall unit theme
- Custom design built-in cupboards
- Composite stone worktop with glass back-painted splash-back
- Stainless steel recessed sink with single lever feature kitchen mixer
- Feature lighting below high-level cupboards and kitchen island (where applicable)
- Built-in wine cooler and coffee machine for units where size permits

### - Integrated appliances, including:

- Oven
- Microwave
- Touch-control four-ring induction hob with ceiling extractor
- Integrated dishwasher
- Integrated fridge / freezer

## MASTER SUITE BATHROOM

- Composite stone vanity shelf with wash basin and mixer tap
- Bathtub with glass screen if rain shower head incorporated
- Ceiling-mounted showerhead and control provided, with handheld shower fitment above baths where no separate shower enclosure is provided in the same bathroom
- Wall-hung WC with soft closing lid and dual flush button
- Marble tiles for 2 and 3 bedrooms, Ceramic tiles for studios and one bedrooms
- Heated towel rail
- Integrated vanity cabinets with mirrors and feature light

## GUEST WC

- Composite stone vanity shelf with wash basin and mixer tap
- Ceiling-mounted showerhead and control with handheld shower
- Wall-hung WC with soft closing lid and dual flush button
- Interior designed wall, finished in a combination of natural stone and designer porcelain tiles
- Matching anti-skid porcelain flooring tiles
- Heated towel rail
- Integrated vanity cabinets with mirror and feature light

## ELECTRICAL FITTINGS

- Dimmable lighting to living room and bedroom
- Socket outlets and isolator switch plates throughout
- Pre-constructed wire ways for wall-hung TV to living room and bedroom with data network

## SECURITY AND PEACE OF MIND

- 24-hour concierge
- CCTV to ground floor entrances
- Access to apartment via video door entry system and electronic access to common areas
- All apartments pre-wired for future security alarm to be fitted by purchaser if required
- Smoke and fire alarm system as per the authority requirements and relevant codes
- Multi-point locking timber veneer entrance door with spy hole viewer

## HEATING AND COOLING

- Thermostatically controlled heating and cooling to apartments

## RESIDENTS' FACILITIES AND COMMON AREAS

- Exclusive access to gymnasium and indoor swimming pool, cinema room, residents' lounge and dedicated children's area located on high floors with panoramic city views
- Exclusive access to roof gardens
- Branded interior designed entrance lobbies, lifts and corridors
- Limited storage spaces available by separate negotiation

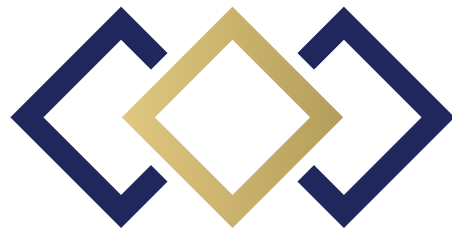
## TELECOMMUNICATIONS

- Wiring for satellite / cable and terrestrial television
- TV outlet to living area and all bedrooms
- Telephone outlet with broadband capacity to living area and all bedrooms
- Fibre-optic connection to all apartments

## CAR PARKING

- Valet parking available
- Limited car parking spaces available by separate negotiation
- Secure bicycle bays available for residents by separate negotiation





**HomesPartner**  
REAL ESTATE

**UAE | UK**

**For more information**

**Call: +44 736 869 1819**

**Visit: [www.homespartner.co.uk](http://www.homespartner.co.uk)**

***DAMAC***